

# EMC TEST REPORT For VCCI

Test Report No. : KES-E1-19T0450  
Date of Issue : Aug. 13, 2019  
Product name : Pentabrid DVR (Digital Video Recorder)  
Model/Type No. : HRX-420N  
Variant Model : -  
Applicant : Hanwha Techwin Co., Ltd.  
Applicant Address : 6, Pangyo-ro 319 Beon-gil, Bundang-gu, Seongnam-si,  
Gyeonggi-do, 13488, KOREA  
Manufacturer : 1. HANWHA TECHWIN(TIANJIN) CO., LTD  
2. HANWHA TECHWIN SECURITY VIETNAM CO.,LTD.  
3. D-TECH CO.,LTD.  
Manufacturer Address : 1. No.11 Weiliu Rd, Micro-Electronic Industrial Park, TEDA, Tianjin,  
300385, People's Republic of China  
2. Lot O-2, Que Vo Industrial Zone extended area,  
Nam Son commune, Bac Ninh city, Bac Ninh province, Vietnam  
3. 173-25, Saneop-ro, Gwonseon-gu, Suwon-si, Gyeonggi- do,  
Korea (Suwon Industrial Complex)  
Date of Receipt : Jul. 25, 2019  
Test date : Aug. 06, 2019 ~ Aug. 07, 2019  
Test Results :  **In Compliance**       **Not in Compliance**

Tested by



Min Seong, Kim  
EMC Test Engineer

Reviewed by



Dong-Hun, Jang  
EMC Technical Manager

This test report is not related to KS Q ISO/IEC 17025 and KOLAS.



**KES Co., Ltd.**

3701, 40, Simin-daero 365beon-gil,  
Dongan-gu, Anyang-si, Gyeonggi-do, 14057, Korea  
Tel: +82-31-425-6200 / Fax: +82-31-424-0450  
www.kes.co.kr

Report No.:  
KES-E1-19T0450  
Page (2) of (34)

---

**REPORT REVISION HISTORY**

<b>Date</b>	<b>Test Report No.</b>	<b>Revision History</b>
Aug. 13, 2019	KES-E1-19T0450	Issued

***This report shall not be reproduced except in full, without the written approval of KES Co., Ltd. This document may be altered or revised by KES Co., Ltd. personnel only, and shall be noted in the revision section of the document. Any alteration of this document not carried out by KES Co., Ltd. will constitute fraud and shall nullify the document.***

---

This report shall not be reproduced except in full, without the written approval of KES Co., Ltd.  
The results shown in this test report refer only to the sample(s) tested unless otherwise stated.  
The authenticity of the test report, contact shchoi@kes.co.kr



---

## TABLE OF CONTENTS

1.0	General Product Description.....	4
1.1	Test Voltage & Frequency .....	7
1.2	Variant Model Differences.....	7
1.3	Device Modifications .....	7
1.4	Equipment Under Test.....	7
1.5	Support Equipments .....	8
1.6	External I/O Cabling .....	9
1.7	EUT Operating Mode(s) .....	9
1.8	Configuration.....	10
1.9	Remarks when standards applied .....	11
1.10	Calibration Details of Equipment Used for Measurement.....	11
1.11	Test Facility .....	11
1.12	Laboratory Accreditations and Listings .....	11
2.0	Test Regulations.....	12
2.1	Conducted Emissions Mains Power Ports.....	14
2.2	Conducted Emissions at Telecommunication Ports.....	15
2.3	Radiated Electric Field Emissions(Below 1 GHz) .....	16
2.4	Radiated Electric Field Emissions(Above 1 GHz) .....	17
APPENDIX A – TEST DATA.....		18
	Conducted Emissions at Mains Power Ports.....	18
	Conducted Emissions at Telecommunication Ports .....	20
	Radiated Electric Field Emissions(Below 1 GHz) .....	23
	Radiated Electric Field Emissions(Above 1 GHz).....	24
	Test Setup Photos and Configuration .....	25
	Conducted Voltage Emissions .....	25
	Conducted Telecommunication Emissions .....	26
	Radiated Electric Field Emissions(Below 1 GHz) .....	27
	Radiated Electric Field Emissions(Above 1 GHz).....	28
	EUT External Photographs.....	29
	EUT Internal Photographs .....	30



## 1.0 General Product Description

### Main Specifications of EUT are:

Video			
Video Input	Analog Camera	Input	16CH, 1Vp-p 75ohm, BNC
		Signal Type	AHD(8MP, 5MP, 4MP, 1080p, 720p) HDTVI(8MP, 5MP, 4MP, 1080p, 720p) HDCVI(5MP, 4MP, 1080p, 720p) CVBS (NTSC/PAL) ※8MP only supported on #1 channel
	Network Camera	Input	2CH (up to 6CH)
		Resolution	CIF ~ 8MP
		Protocols	SUNAPI(Wisenet), ONVIF
Live	Local Display		1x HDMI, 1x VGA
Operating System	Embedded		Linux
Recording	Compression		H.265, H.264, MJPEG
	Record Rate(Analog)		- Analog Camera(NTSC/PAL) (Main Stream) 8MP 8/8fps CH, 5M 12/12fps CH, 4M 15/12fps CH, 2M 30/25fps CH, 720p 30/25fps/CH, SD 30/25fps/CH (Sub Stream) HD: 640x360 full fps/CH, SD: upto SD full fps/CH  *The maximum recording frame rate depends on the frame rate of the input camera.
	Mode		Manual, Schedule (Continuous/Event), Event(Pre/Post), Dual Track
	Event Trigger		Alarm Input Analog Camera Video Loss, Motion Detection, Tampering Network Camera Camera Event (Sensor, MD, Video analytics), VA event (Tampering, Enter / Exit, Passing, Virtual- line, (Dis)Appear, Face Detection, Audio detection), Defocus camera event
	Event Action		E-mail, PTZ preset, Alarm out, Buzzer, Monitor out
	Overwrite modes		Overwrite On/Off

This report shall not be reproduced except in full, without the written approval of KES Co., Ltd.  
The results shown in this test report refer only to the sample(s) tested unless otherwise stated.  
The authenticity of the test report, contact shchoi@kes.co.kr



**KES Co., Ltd.**

3701, 40, Simin-daero 365beon-gil,  
 Dongan-gu, Anyang-si, Gyeonggi-do, 14057, Korea  
 Tel: +82-31-425-6200 / Fax: +82-31-424-0450  
 www.kes.co.kr

Report No.:  
 KES-E1-19T0450  
 Page (5) of (34)

<b>Search &amp; Playback</b>	Performance		Max. 4 users (Set 1, Remote 3)
	Resolution		CIF ~ 8MP
	Playback Control		Fast Forward/Backward (x2,x4,x8,x16,x32,x64, x128, x256) Slow Forward/Backward (x1/2,x1/4,x1/8) ※Move one step up/down
	Internal		<b>Up to 1 SATA HDDs</b> <b>Max. 6TB/HDD(TBD)</b>
<b>Storage</b>	External		USB(for Backup)
	File Format		BU(DVR Player), SEC(Set, Include Player), AVI(Webviewer only)
<b>NETWORK</b>			
Protocol support			TCP/IP, UDP/IP, RTP (UDP), RTP (TCP), RTSP, NTP, HTTP, DHCP (Server, Client), PPPoE, SMTP, ICMP, IGMP, ARP, DNS, DDNS, uPnP, HTTPS, SNMP, ONVIF (Profile-S), SUNAPI(Server, Client)
Max. Remote users			Search (3), Live Unicast (10), Multicast (20)
Security			IPv4/v6
Security			IP address filtering, User access log, 802.1x Authentication, Encryption (ID/PW, Recording, Transmission, Backup)
OS			Supported OS : Window XP (Service pack 2 or above), Vista, 7, 8, 10, Mac OS X (10.7 or above)
Web Browser			Google Chrome 47 or above, MS Edge 20 or above, Safari 9 or above *support Plug-in free Web
Viewer Software			SSM, Webviewer, SmartViewer, Wisenet Mobile Viewer
CMS Support			SDK/CGI(SUNAPI)
<b>Function</b>			
Easy Configuration			Setup Wizard (Language Date/Time, Password, Network, Auto Camera Configuration), P2P (QR code)
ARB (Auto Recovery Backup)			support
PTZ	Control/Preset		Via GUI & RS-485, Webviewer, SPC-7000 / 300 presets
Smart phone	OS / Protocol support		Android , iOS, RTP, RTSP, HTTP, CGI(SUNAPI)
	Control		Live(4ch) : Multi-Profile Support Playback(1ch, Max. 2MP) Event push
<b>System Control</b>			Mouse, IR Remocon, Web, SPC-7000

This report shall not be reproduced except in full, without the written approval of KES Co., Ltd.  
 The results shown in this test report refer only to the sample(s) tested unless otherwise stated.  
 The authenticity of the test report, contact shchoi@kes.co.kr



**KES Co., Ltd.**

3701, 40, Simin-daero 365beon-gil,  
 Dongan-gu, Anyang-si, Gyeonggi-do, 14057, Korea  
 Tel: +82-31-425-6200 / Fax: +82-31-424-0450  
 www.kes.co.kr

Report No.:  
 KES-E1-19T0450  
 Page (6) of (34)

INDICATOR / INTERFACE		
Front	Indicator	Power status LED 1ea, Record status LED 1ea, Network Action LED 1ea
Monitors	Mode	
	HDMI	1 HDMI (4K(3840 x 2160), 2K(2560 x 1440), 1920x1080, 1280x1024, 1280x720)
	VGA	1 VGA (1920x1080, 1280x1024, 1280x720)
	Composite(Spot)	BNC(1CH) ※ Included OSD On Screen, Single, Multi, Auto Change mode Support
Audio	Inputs/Output	1CH line in / 1CH line out
	Compression	G.711
	Sampling rate	8KHz
Alarm	Inputs/Outputs	Terminal 4 Inputs (NO/NC) / Terminal 1 relay Outputs (NO/NC) MAX DC18V, 2A, Typical DC12V, 2A
Ethernet		1 RJ45 10/100/1000 Base-T
USB		2 ports(USB 2.0, Front/Rear)
Serial		RS-485(Full Duplex) for PTZ, Samsung System Keyboard
Coaxia Control		Support (CVBS and AHD/CVI/TVI)
Reset		Yes(Factory Reset, Alarm Reset)
<b>General</b>		
Electrical	Input Voltage/Current	DC12V Adaptor(100~250V AC ±10% , 50/60Hz)
	Power consumption	(TBD) Max. W
Environmental	Operating Temperature/Humidity	+0°C to +40°C (+32°F to +104°F) / 20% to 85% RH
Mechanical	Color / Material	Black / Metal
	Dimension (W x H x D)	(TBD)W300 x H 48 x D 208.7 (11.81" x 1.89" x 8.22")
	Weight (with hard disks)	TBD kg

This report shall not be reproduced except in full, without the written approval of KES Co., Ltd.  
 The results shown in this test report refer only to the sample(s) tested unless otherwise stated.  
 The authenticity of the test report, contact shchoi@kes.co.kr



## 1.1 Test Voltage & Frequency

Unless indicated otherwise on the individual data sheet or test results, the test voltage and frequency was as indicated below.

Voltage       230 Vac    100 Vac    24 Vac    12 Vdc    PoE

Frequency     50 Hz     60 Hz            Hz

## 1.2 Variant Model Differences

Not applicable

## 1.3 Device Modifications

Not applicable

## 1.4 Equipment Under Test

Description	Model Number	Serial Number	Manufacturer	Remarks
Pentabrid DVR (Digital Video Recorder)	HRX-420N	-	HANWHA TECHWIN (TIANJIN) CO., LTD	EUT
AC / DC Adapter	KPL-048F-VI	-	Channel Well Technology (Guangzhou) Co.,Ltd.	-
Mouse	MOKJUO	-	Primax Electronics Ltd.	-
HDD	WD40PUEX- 64N96Y0	-	Western Digital	4 TB



## 1.5 Support Equipments

Laptop	NT-R410Y	Z9YJ93CS300631H	SAMSUNG	Remarks
Camera	SDC-79446BF	-	HANWHA TECHWIN (TIANJIN) CO., LTD	-
Camera Adapter	FSP-060-DIBAN2	-	Zhonghan Electronics (Shenzhen) Co., Ltd.	-
Monitor 1	SMT-2233	ZC6U67VH500194D	Weihai Daewoo Electronics Co., Ltd.	-
Monitor 2	SMT-2232	C95V67VF900038B	Weihai Daewoo Electronics Co., Ltd.	-
Monitor 3	SMT-2232	C95V67VF900015Y	Weihai Daewoo Electronics Co., Ltd.	-
Notebook	NT730U3E	JJRE91CF200065A	Samsung Electronics	-
Notebook Adapter	PA-1600-66	AD-6019P	LITEON	-
Speaker	BR10000A CUVE	-	BEIJING EDIFIER HI-TECH GROUP.	-
MIC	CMK-303	-	CAMAC	-
Controller	SPC-1010	C50E67WG10100F	SamSung Techwin Co.,Ltd.	-
Controller Adapter	RS-AB1000	-	Dongguan Jinhua Sheng Power Technology Co.,Ltd.	-
Alarm	-	-	-	-
Button Alarm	-	-	-	-
USB Memory	-	-	SONY	16 GB

This report shall not be reproduced except in full, without the written approval of KES Co., Ltd.  
The results shown in this test report refer only to the sample(s) tested unless otherwise stated.  
The authenticity of the test report, contact shchoi@kes.co.kr



## 1.6 External I/O Cabling

Start		END		Cable Spec.	
Description	I/O Port	Description	I/O Port	Length	Shield
Pentabrid DVR (Digital Video Recorder) (EUT)	VIDEO IN	Camera	BNC	10.0	U
	HDMI	Monitor 1	HDMI	1.5	S
	VGA OUT	Monitor 2	D-SUB	1.5	S
	SPOT	Monitor 3	BNC	3.0	S
	NETWORK	Notebook	RJ-45	3.0	U
	AUDIO OUT	Speaker	RCA	1.6	U
	AUDIO IN	MIC	RCA	1.6	U
	RS-485	Controller	RS-485	10.0	U
	Alarm Out	Alarm	Alarm In	10.0	U
	Alarm In	Button Alarm	Alarm Out	10.0	U
	USB 2.0	Mouse	USB	1.3	U
	USB 3.0	USB Memory	USB	-	-

\* Unshielded=U, Shielded=S

## 1.7 EUT Operating Mode(s)

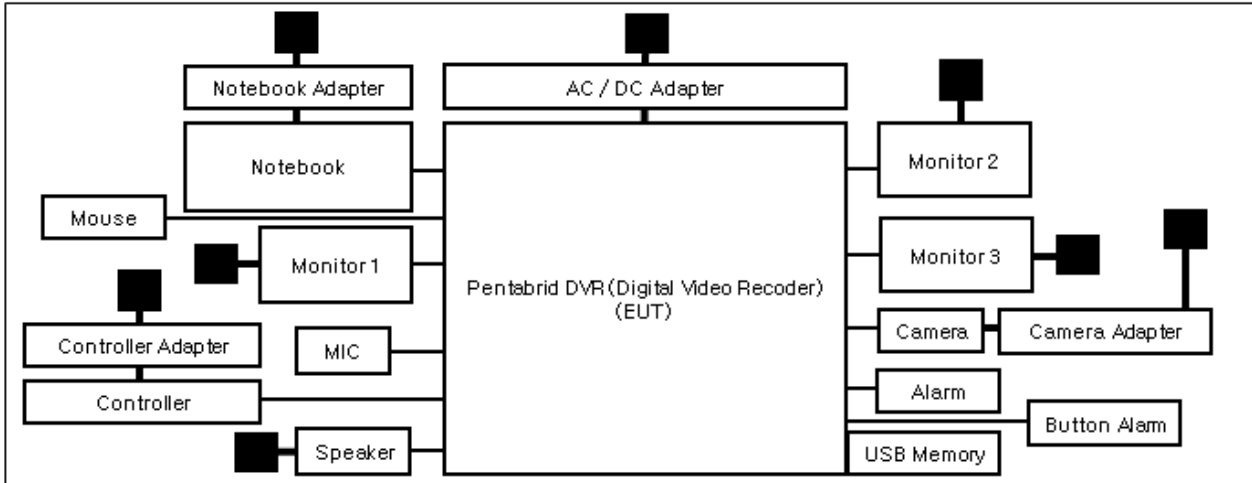
Test mode	operating
OP	EUT Monitoring, Ping Test

EUT Test operating S/W		
Name	Version	Manufacture Company
WebViewer	-	Hanwha Techwin Co., Ltd.

This report shall not be reproduced except in full, without the written approval of KES Co., Ltd.  
The results shown in this test report refer only to the sample(s) tested unless otherwise stated.  
The authenticity of the test report, contact shchoi@kes.co.kr

## 1.8 Configuration

■ AC Main  
 □ DC Main



This report shall not be reproduced except in full, without the written approval of KES Co., Ltd.  
 The results shown in this test report refer only to the sample(s) tested unless otherwise stated.  
 The authenticity of the test report, contact shchoi@kes.co.kr

## 1.9 Remarks when standards applied

N/A







## 1.10 Calibration Details of Equipment Used for Measurement

Test equipment and test accessories are calibrated on regular basis. The maximum time between calibrations is one year or what is recommended by the manufacturer, whichever is less.

## 1.11 Test Facility

The measurement facility is located at 473-21 Gayeo-ro, Yeosu-si, Gyeonggi-do, 12658, Korea. The sites are constructed in conformance with the requirements of ANSI C63.4:2014 and CISPR 16-1-4:2012

## 1.12 Laboratory Accreditations and Listings

Country	Agency	Scope of Accreditation	Logo
KOREA	<b>RRA</b>	EMI (3 m & 10 m Semi-Anechoic Chamber , 10 m Open Area and conducted test site) EMS (ESD, RS, EFT/Burst, Surge, CS, Magnetic, Dips and interruptions)	 KR0100
International	<b>KOLAS</b>	EMI (3 m & 10 m Semi-Anechoic Chamber , and conducted test site) EMS (ESD, RS, EFT/Burst, Surge, CS, Magnetic, Dips and interruptions)	 KT489
USA	<b>FCC</b>	3 m & 10 m Semi-Anechoic Chamber, 10 m Open Area and Conducted test site to perform FCC Part 15/18 measurements.	 KR0100
Canada	<b>ISED</b>	3 m & 10 m Semi-Anechoic Chamber and Conducted test site	 23298-1
JAPAN	<b>VCCI</b>	Mains Ports Conducted Interference Measurement, Telecommunication Ports Conducted Disturbance Measurement and Radiation 10 meter site, Facility for measuring radiated disturbance above 1 GHz	 R-20056, C-20036, T-20040, G-20057
Europe	<b>TÜV SÜD</b>	EMI (3 m & 10 m Semi-Anechoic Chamber , 10 m Open Area and conducted test site) EMS (ESD, RS, EFT/Burst, Surge, CS, Magnetic, Dips and interruptions)	 CARAT 001633 0003

This report shall not be reproduced except in full, without the written approval of KES Co., Ltd.  
The results shown in this test report refer only to the sample(s) tested unless otherwise stated.  
The authenticity of the test report, contact shchoi@kes.co.kr

## 2.0 Test Regulations

The emissions tests were performed according to following regulations:

**EMC – Directive 2014/30/EU**

EN 61000-6-3:2011

EN 61000-6-1:2007

EN 61000-6-4:2007 +A1:2011

EN 61000-6-2:2005

EN 55011:2007 +A1:2010

Group 1

Group 2

Class A

Class B

EN 55014-1:2006 +A2:2011

EN 55014-2:1997 +A2:2008

EN 55015:2013

EN 61547 :2009

EN 55032:2015

Class A

Class B

EN 55024:2010 +A1:2015

EN 50130-4:2011 +A1:2014

EN 61000-3-2:2014

EN 61000-3-3:2013

EN 61326-1:2013



- 
- VCCI-CISPR 32:2016**  Class A  Class B
- AS/NZS CISPR32:2015**  Class A  Class B
- 47 CFR Part 15, Subpart B**
- CISPR 22:2009 +A1:2010  Class A  Class B
- ANSI C63.4-2009
- IC Regulation ICES-003 : 2016**
- CAN/CSA CISPR 22-10  Class A  Class B
- ANSI C63.4-2014
- RE- Directive 2014/53/EU**
- EN 301 489-1 V1.9.2
- Equipment for fixed use
- Equipment for vehicular use
- Equipment for portable use
- EN 301 489-3 V1.6.1
- EN 301 489-17 V2.2.1
- EN 60945:2002

---

This report shall not be reproduced except in full, without the written approval of KES Co., Ltd.  
The results shown in this test report refer only to the sample(s) tested unless otherwise stated.  
The authenticity of the test report, contact shchoi@kes.co.kr



## 2.1 Conducted Emissions Mains Power Ports

### Test Date

Aug. 06, 2019

### Test Location

Electro wave Shieldroom #6

### Test Equipment

Used	Description	Model Number	Manufacturer	Serial Number	Cal. Due
<input checked="" type="checkbox"/>	EMI Test S/W	EMC32	R & S	9.12.00	-
<input checked="" type="checkbox"/>	EMI TEST RECEIVER	ESR3	R & S	101781	04, 22, 2020
<input checked="" type="checkbox"/>	LISN	ENV216	R & S	101787	01, 04, 2020
<input checked="" type="checkbox"/>	LISN	ESH2-Z5	R & S	100450	04, 22, 2020
<input checked="" type="checkbox"/>	PULSE LIMITER	ESH3-Z2	R & S	101915	11, 26, 2019

### Test Conditions

Temperature: 25,4 °C  
Relative Humidity: 53,9 % R.H.

### Frequency Range of Measurement

150 kHz to 30 MHz

### Instrument Settings

IF Band Width: 9 kHz

### Test Results

The requirements are:

- PASS
- NOT PASS
- NOT APPLICABLE

### Remarks

See Appendix A for test data.

## 2.2 Conducted Emissions at Telecommunication Ports

### Test Date

Aug. 06, 2019

### Test Location

Electro wave Shieldroom #6

### Test Equipment

Used	Description	Model Number	Manufacturer	Serial Number	Cal. Due
<input checked="" type="checkbox"/>	EMI Test S/W	EMC32	R & S	9.12.00	-
<input checked="" type="checkbox"/>	EMI TEST RECEIVER	ESR3	R & S	101781	04, 22, 2020
<input checked="" type="checkbox"/>	LISN	ENV216	R & S	101787	01, 04, 2020
<input checked="" type="checkbox"/>	LISN	ESH2-Z5	R & S	100450	04, 22, 2020
<input checked="" type="checkbox"/>	PULSE LIMITER	ESH3-Z2	R & S	101915	11, 26, 2019
<input checked="" type="checkbox"/>	8-WIRE ISN CAT3,5	ENY81	R & S	100174	01, 07, 2020
<input checked="" type="checkbox"/>	8-WIRE ISN CAT6	ENY81-CAT6	R & S	101665	01, 07, 2020

### Test Conditions

Temperature: 25,4 °C  
Relative Humidity: 53,9 % R.H.

### Frequency Range of Measurement

150 kHz to 30 MHz

### Instrument Settings

IF Band Width: 9 kHz

### Test Results

The requirements are:

- PASS
- NOT PASS
- NOT APPLICABLE

### Remarks

See Appendix A for test data.

## 2.3 Radiated Electric Field Emissions(Below 1 GHz)

### Test Date

Aug. 06, 2019

### Test Location

OPEN AREA TEST SITE #2       SEMI ANECHOIC CHAMBER #4(10m)

### Test Equipment

Used	Description	Model Number	Manufacturer	Serial Number	Cal. Due
<input checked="" type="checkbox"/>	EMI Test S/W	EP5/RE	TOYO Corporation	6.0.0	-
<input checked="" type="checkbox"/>	EMI TEST RECEIVER	ESU26	R & S	100551	04, 09, 2020
<input checked="" type="checkbox"/>	AMPLIFIER	SCU 01	R & S	100603	11, 26, 2019
<input checked="" type="checkbox"/>	TRILOG-BROADBAND ANTENNA	VULB9163	Schwarzbeck	715	11, 29, 2020
<input checked="" type="checkbox"/>	ATTENUATOR	8491A	HP	32173	03, 11, 2020

### Test Conditions

Temperature: 24,4 °C  
Relative Humidity: 52,9 % R.H.

### Frequency Range of Measurement

30 MHz to 1 GHz

### Instrument Settings

IF Band Width: 120 kHz

### Test Results

The requirements are:

- PASS  
 NOT PASS  
 NOT APPLICABLE

### Remarks

See Appendix A for test data.





## 2.4 Radiated Electric Field Emissions(Above 1 GHz)

### Test Date

Aug. 07, 2019

### Test Location

SEMI ANECHOIC CHAMBER #3

### Test Equipment

Used	Description	Model Number	Manufacturer	Serial Number	Cal. Due
<input checked="" type="checkbox"/>	EMI Test S/W	EP5/RE	TOYO Corporation	6.0.0	-
<input checked="" type="checkbox"/>	EMI TEST RECEIVER	ESR7	R & S	101190	08, 06, 2020
<input checked="" type="checkbox"/>	PREAMPLIFIER	8449B	AGILENT	3008A01967	05, 27, 2020
<input type="checkbox"/>	ATTENUATOR	8491A	HP	35496	03, 11, 2020
<input checked="" type="checkbox"/>	DOUBLE RIDGED HORN ANTENNA	SAS-571	A.H.SYSTEM,INC	781	03, 12, 2020

### Test Conditions

Temperature: 24,2 °C  
Relative Humidity: 54,2 % R.H.

### Frequency Range of Measurement

1 GHz to 6 GHz

### Instrument Settings

IF Band Width: 1 MHz

### Test Results

The requirements are:

- PASS
- NOT PASS
- NOT APPLICABLE

### Remarks

See Appendix A for test data.

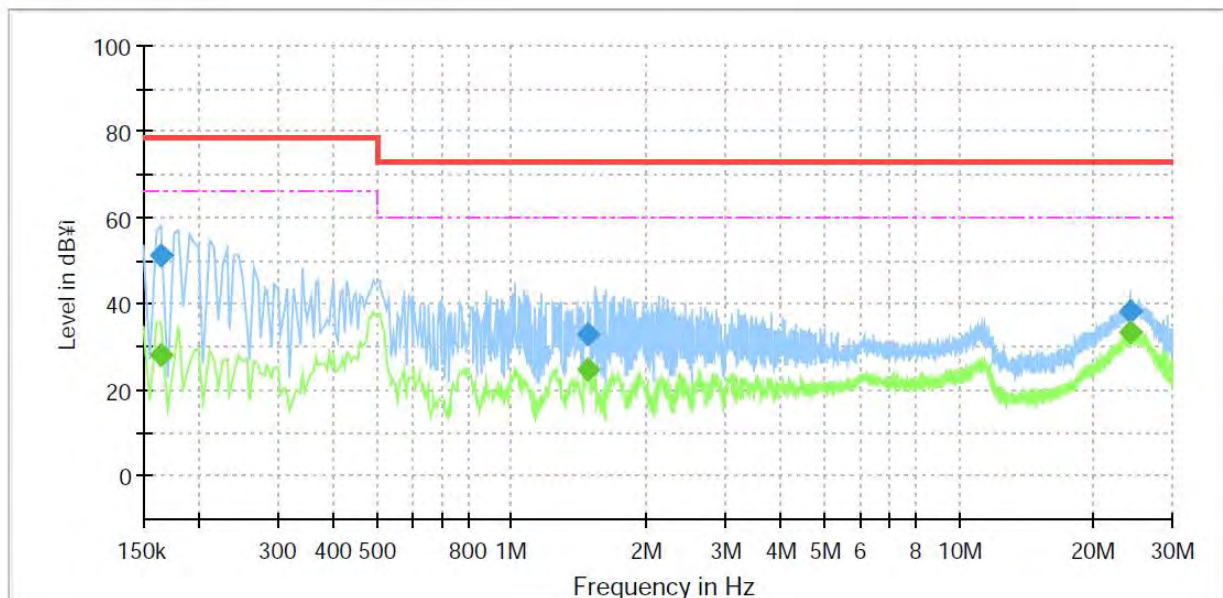
## APPENDIX A – TEST DATA

### Conducted Emissions at Mains Power Ports

HOT LINE

#### Common Information

Test Description:	Conducted Emission
Model No.:	HRX-420N
Phase:	
Mode:	H
Operator Name:	KES



#### Final Result

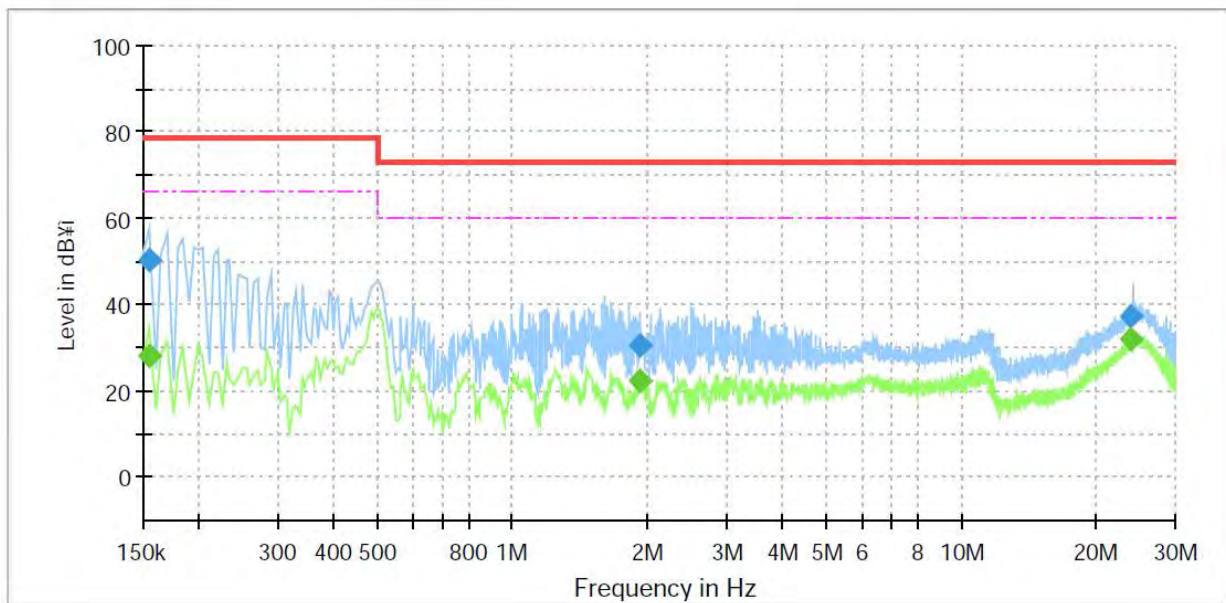
Frequency (MHz)	QuasiPeak (dBµV)	CAverage (dBµV)	Limit (dBµV)	Margin (dB)	Meas. Time (ms)	Bandwidth (kHz)	Line	Corr. (dB)
0.165000	—	28.07	66.00	37.93	1000.0	9.000	L1	19.5
0.165000	51.23	—	79.00	27.77	1000.0	9.000	L1	19.5
1.480000	—	24.80	60.00	35.20	1000.0	9.000	L1	20.4
1.480000	32.90	—	73.00	40.10	1000.0	9.000	L1	20.4
24.060000	—	33.34	60.00	26.66	1000.0	9.000	L1	20.5
24.060000	38.30	—	73.00	34.70	1000.0	9.000	L1	20.5

This report shall not be reproduced except in full, without the written approval of KES Co., Ltd.  
 The results shown in this test report refer only to the sample(s) tested unless otherwise stated.  
 The authenticity of the test report, contact shchoi@kes.co.kr

NEUTRAL LINE

**Common Information**

Test Description: Conducted Emission  
 Model No.: HRX-420N  
 Phase:  
 Mode: N  
 Operator Name: KES



**Final Result**

Frequency (MHz)	QuasiPeak (dBµV)	CAverage (dBµV)	Limit (dBµV)	Margin (dB)	Meas. Time (ms)	Bandwidth (kHz)	Line	Corr. (dB)
0.155000	---	27.96	66.00	38.04	1000.0	9.000	N	19.5
0.155000	50.54	---	79.00	28.46	1000.0	9.000	N	19.5
1.925000	---	22.45	60.00	37.55	1000.0	9.000	N	20.5
1.925000	30.60	---	73.00	42.40	1000.0	9.000	N	20.5
24.005000	---	32.21	60.00	27.79	1000.0	9.000	N	20.6
24.005000	37.07	---	73.00	35.93	1000.0	9.000	N	20.6

◆ Calculation

QuasiPeak [dBµV] / CAverage [dBµV] = Reading Value [dBµV] + Corr. [dB]

QuasiPeak / CAverage : The Final Value

Reading Value : Not shown in the table.

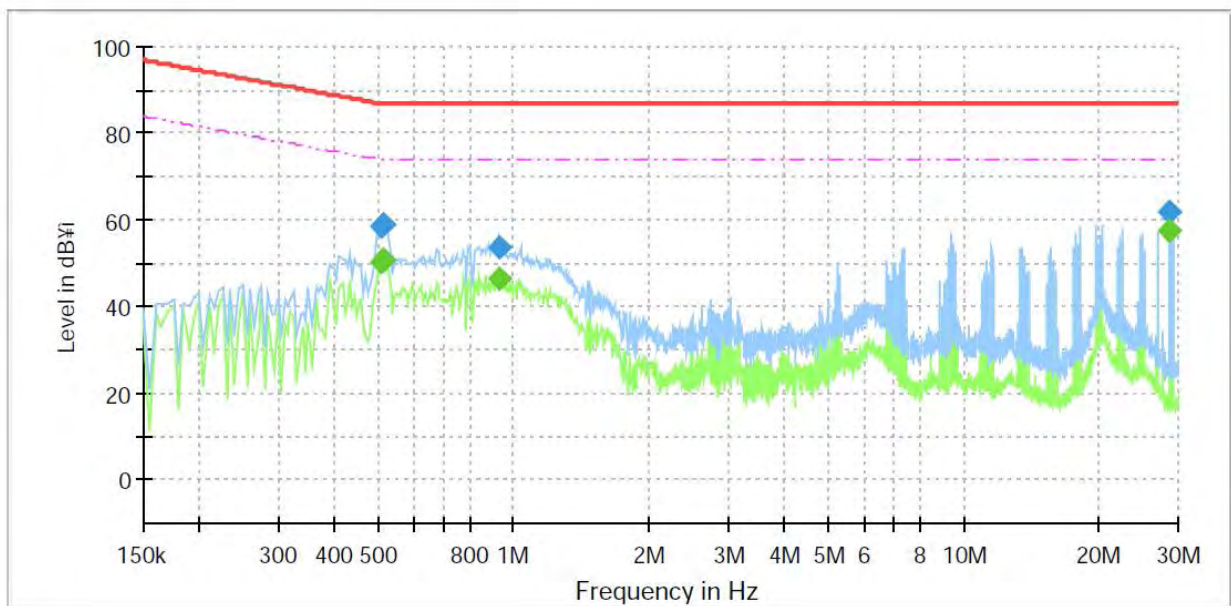
Corr. : Correction values (LISN FACTOR + (Cable Loss + Pulse Limiter FACTOR))

## Conducted Emissions at Telecommunication Ports

[10 Mbps]

### Common Information

Test Description:	Telecommunication Emission
Model No.:	HRX-420N
Mode :	
Speed :	10 Mbps
Operator Name:	KES



### Final Result

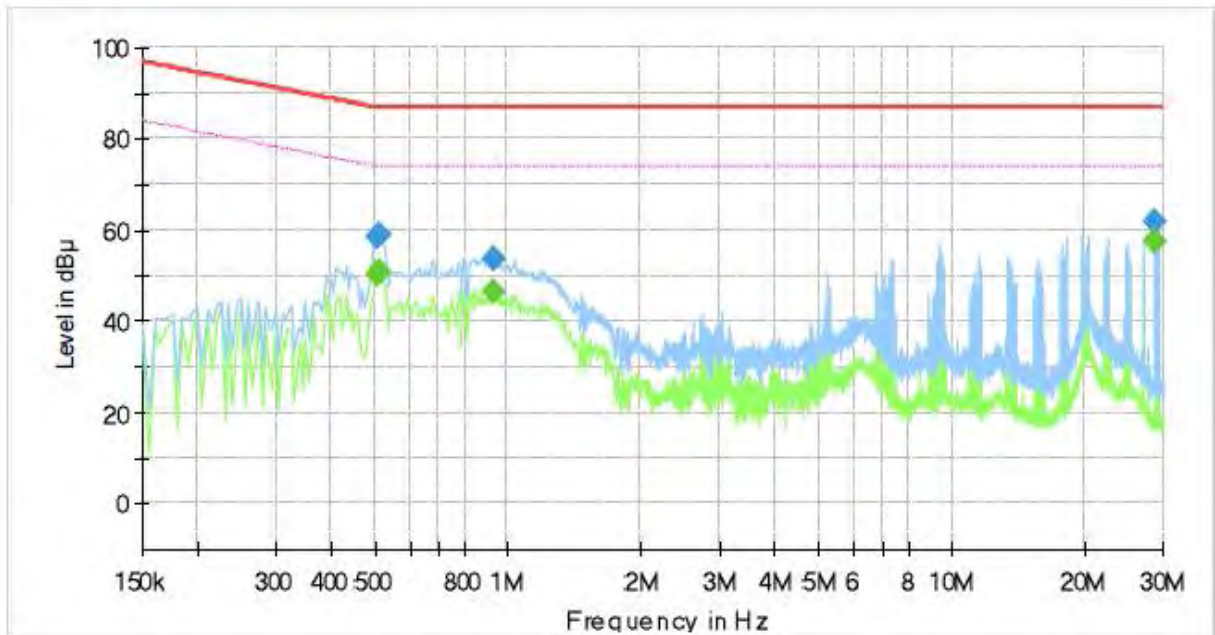
Frequency (MHz)	QuasiPeak (dBµV)	CAverage (dBµV)	Limit (dBµV)	Margin (dB)	Meas. Time (ms)	Bandwidth (kHz)	Line	Corr. (dB)
0.510000	---	50.16	74.00	23.84	1000.0	9.000	Single Line	20.1
0.510000	58.47	---	87.00	28.53	1000.0	9.000	Single Line	20.1
0.515000	---	50.85	74.00	23.15	1000.0	9.000	Single Line	20.1
0.515000	59.03	---	87.00	27.97	1000.0	9.000	Single Line	20.1
0.930000	---	46.60	74.00	27.40	1000.0	9.000	Single Line	20.4
0.930000	53.61	---	87.00	33.39	1000.0	9.000	Single Line	20.4
28.685000	---	57.54	74.00	16.46	1000.0	9.000	Single Line	21.1
28.685000	61.69	---	87.00	25.31	1000.0	9.000	Single Line	21.1

This report shall not be reproduced except in full, without the written approval of KES Co., Ltd.  
 The results shown in this test report refer only to the sample(s) tested unless otherwise stated.  
 The authenticity of the test report, contact shchoi@kes.co.kr

**[100 Mbps]**

**Common Information**

Test Description:	Telecommunication Emission
Model No.:	HRX-420N
Mode :	
Speed :	100 Mbps
Operator Name:	KES



**Final Result**

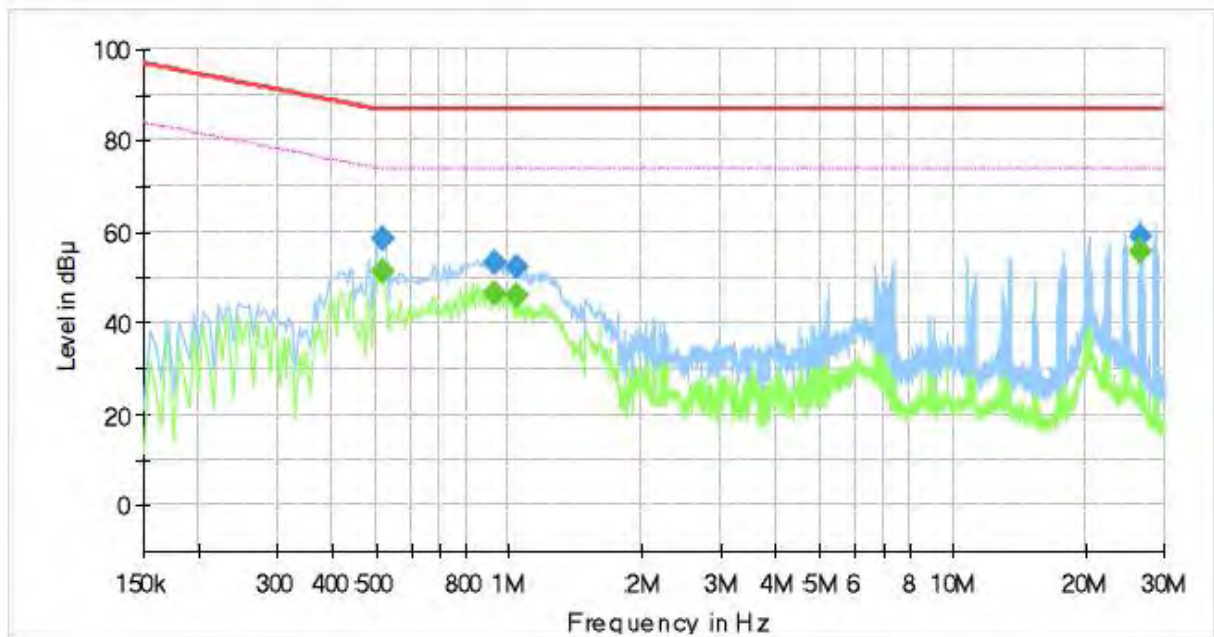
Frequency (MHz)	QuasiPeak (dBµV)	CAverage (dBµV)	Limit (dBµV)	Margin (dB)	Meas. Time (ms)	Bandwidth (kHz)	Line	Corr. (dB)
0.510000	---	50.30	74.00	23.70	1000.0	9.000	Single Line	20.1
0.510000	58.97	---	87.00	28.03	1000.0	9.000	Single Line	20.1
0.515000	---	51.85	74.00	22.15	1000.0	9.000	Single Line	20.1
0.515000	59.03	---	87.00	27.97	1000.0	9.000	Single Line	20.1
0.930000	---	46.54	74.00	27.44	1000.0	9.000	Single Line	20.4
0.930000	53.51	---	87.00	33.49	1000.0	9.000	Single Line	20.4
28.685000	---	57.54	74.00	16.46	1000.0	9.000	Single Line	21.1
28.685000	62.59	---	87.00	24.41	1000.0	9.000	Single Line	21.1

This report shall not be reproduced except in full, without the written approval of KES Co., Ltd.  
The results shown in this test report refer only to the sample(s) tested unless otherwise stated.  
The authenticity of the test report, contact shchoi@kes.co.kr

**[1 000 Mbps]**

**Common Information**

Test Description:	Telecommunication Emission
Model No.:	HRX-420N
Mode :	
Speed :	1 000 Mbps
Operator Name:	KES



**Final Result**

Frequency (MHz)	QuasiPeak (dBµV)	CAverage (dBµV)	Limit (dBµV)	Margin (dB)	Meas. Time (ms)	Bandwidth (kHz)	Line	Corr. (dB)
0.520000	---	51.28	74.00	22.72	1000.0	9.000	Single Line	19.9
0.520000	58.64	---	87.00	28.36	1000.0	9.000	Single Line	19.9
0.925000	---	46.63	74.00	27.37	1000.0	9.000	Single Line	20.3
0.925000	53.13	---	87.00	33.87	1000.0	9.000	Single Line	20.3
1.035000	---	45.88	74.00	28.12	1000.0	9.000	Single Line	20.3
1.035000	52.16	---	87.00	34.84	1000.0	9.000	Single Line	20.3
26.485000	---	55.56	74.00	18.44	1000.0	9.000	Single Line	20.6
26.485000	59.22	---	87.00	27.78	1000.0	9.000	Single Line	20.6

◆ Calculation

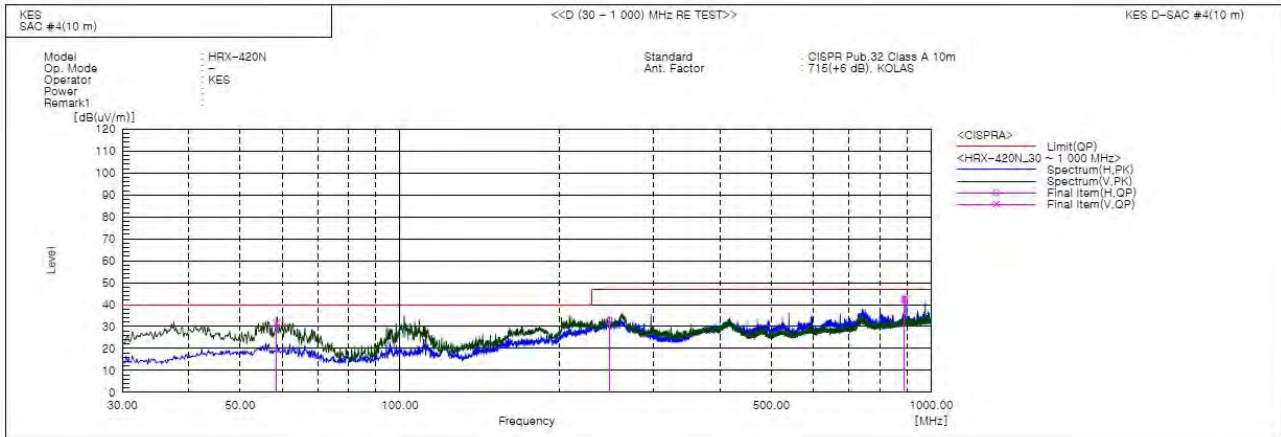
QuasiPeak[dBuV] / CAverage [dBuV] = Reading Value[dBuV] + Corr. [dB]

QuasiPeak / CAverage : The Final Value

Reading Value : Not shown in the table.

Corr. : Correction values (ISN FACTOR + (Cable Loss + Pulse Limiter FACTOR))

## Radiated Electric Field Emissions(Below 1 GHz)



### Final Result

No.	Frequency [MHz]	(P)	Reading QP [dB(uV)]	c.f [dB(1/m)]	Result QP [dB(uV/m)]	Limit QP [dB(uV/m)]	Margin QP [dB]	Height [cm]	Angle [deg]	Remark
1	58.615	V	53.8	-22.2	31.6	40.0	8.4	110.0	218.0	
2	247.644	H	52.6	-20.0	32.6	47.0	14.4	400.0	46.0	
3	890.948	V	48.3	-5.8	42.5	47.0	4.5	164.0	327.0	
4	890.996	H	48.0	-5.8	42.2	47.0	4.8	238.0	211.0	

### ◆ Calculation

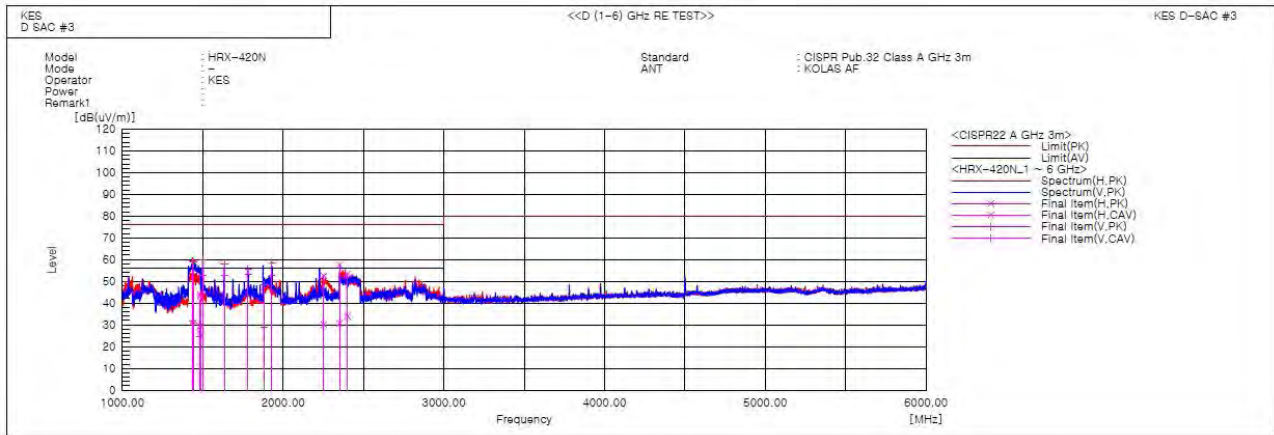
Corrected Amplitude [dBuV] = Amplitude[dBuV] + Correction Factor [dB]

Corrected Amplitude : The Final Value, Amplitude : Reading Value,

Correction Factor : ANT FACTOR + Cable loss



## Radiated Electric Field Emissions(Above 1 GHz)



### Final Result

No.	Frequency [MHz]	(P)	Reading PK [dB(uV)]	Reading CAV [dB(uV)]	c.f [dB(1/m)]	Result PK [dB(uV/m)]	Result CAV [dB(uV/m)]	Limit PK [dB(uV/m)]	Limit AV [dB(uV/m)]	Margin PK [dB]	Margin CAV [dB]	Height [cm]	Angle [deg]	Remark
1	1435.545	V	66.3	38.5	-6.9	59.4	31.6	76.0	56.0	16.6	24.4	100.0	23.4	
2	1442.211	V	66.0	37.8	-6.9	59.1	30.9	76.0	56.0	16.9	25.1	100.0	24.3	
3	1479.174	V	46.5	31.2	-6.7	39.8	24.5	76.0	56.0	36.2	31.5	100.0	210.6	
4	1484.750	H	49.9	36.0	-6.6	43.3	29.4	76.0	56.0	32.7	26.6	100.0	203.8	
5	1486.593	H	50.5	32.4	-6.6	43.9	25.8	76.0	56.0	32.1	30.2	100.0	200.2	
6	1499.937	V	66.4	59.4	-6.5	59.9	52.9	76.0	56.0	16.1	3.1	100.0	248.0	
7	1633.350	V	63.3	58.0	-5.4	57.9	52.6	76.0	56.0	18.1	3.4	100.0	207.0	
8	1781.690	V	59.3	56.9	-3.7	55.6	53.2	76.0	56.0	20.4	2.8	100.0	188.2	
9	1881.599	V	50.9	31.6	-2.6	48.3	29.0	76.0	56.0	27.7	27.0	100.0	212.4	
10	1930.330	V	60.8	55.0	-2.3	58.5	52.7	76.0	56.0	17.5	3.3	100.0	175.7	
11	2252.755	H	53.8	31.4	-1.2	52.6	30.2	76.0	56.0	23.4	25.8	100.0	76.4	
12	2351.080	H	58.3	31.6	-0.8	57.5	30.8	76.0	56.0	18.5	25.2	100.0	81.6	
13	2399.727	H	54.0	34.6	-0.6	53.4	34.0	76.0	56.0	22.6	22.0	100.0	77.8	

### ◆ Calculation

$$\text{Result(PK/CAV)} [\text{dB}(\mu\text{V}/\text{m})] = (\text{Reading(PK/CAV)}[\text{dB}(\mu\text{V})] + \text{c.f}[\text{dB}(1/\text{m})])$$

$$\text{Margin(PK/CAV)}[\text{dB}] = \text{Limit}[\text{dB}(\mu\text{V}/\text{m})] - \text{Result(PK/CAV)} [\text{dB}(\mu\text{V}/\text{m})]$$

Reading(PK/CAV) : Reading value, Result(PK/CAV) : Reading value + Factor value

Limit(QP) : Limit value, c.f : (ANT Factor + Cable Loss - Preamp Factor), Margin: Margin value

This report shall not be reproduced except in full, without the written approval of KES Co., Ltd.  
The results shown in this test report refer only to the sample(s) tested unless otherwise stated.  
The authenticity of the test report, contact shchoi@kes.co.kr



---

## Test Setup Photos and Configuration

### Conducted Voltage Emissions



---

This report shall not be reproduced except in full, without the written approval of KES Co., Ltd.  
The results shown in this test report refer only to the sample(s) tested unless otherwise stated.  
The authenticity of the test report, contact [shchoi@kes.co.kr](mailto:shchoi@kes.co.kr)

---

## Conducted Telecommunication Emissions



---

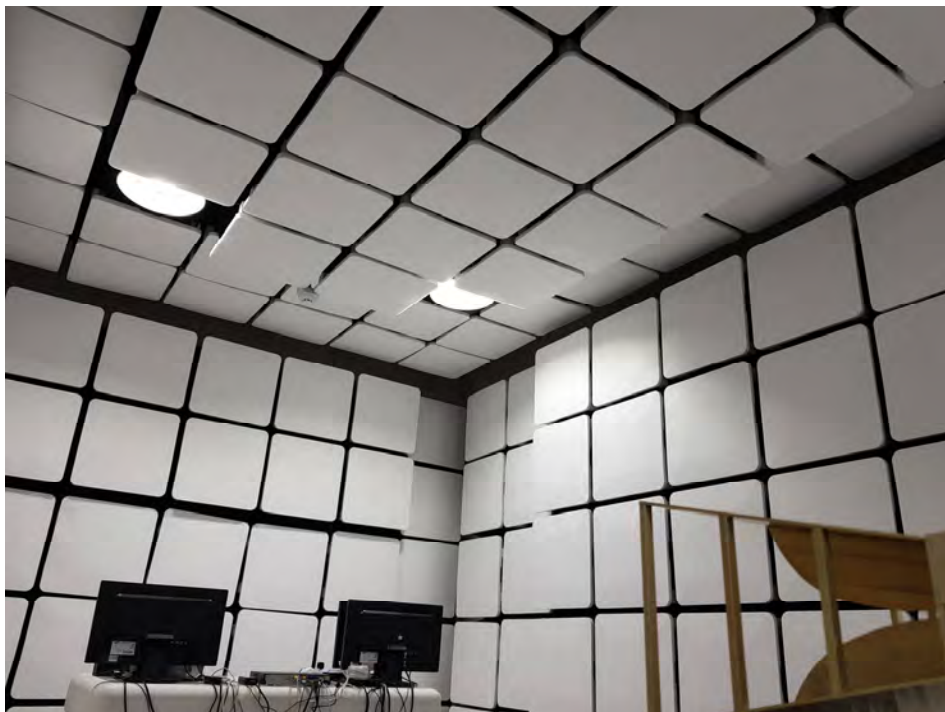
This report shall not be reproduced except in full, without the written approval of KES Co., Ltd.  
The results shown in this test report refer only to the sample(s) tested unless otherwise stated.  
The authenticity of the test report, contact [shchoi@kes.co.kr](mailto:shchoi@kes.co.kr)

## Radiated Electric Field Emissions(Below 1 GHz)



This report shall not be reproduced except in full, without the written approval of KES Co., Ltd.  
The results shown in this test report refer only to the sample(s) tested unless otherwise stated.  
The authenticity of the test report, contact [shchoi@kes.co.kr](mailto:shchoi@kes.co.kr)

## Radiated Electric Field Emissions(Above 1 GHz)



This report shall not be reproduced except in full, without the written approval of KES Co., Ltd.  
The results shown in this test report refer only to the sample(s) tested unless otherwise stated.  
The authenticity of the test report, contact [shchoi@kes.co.kr](mailto:shchoi@kes.co.kr)

## EUT External Photographs

(Top)



(Bottom)



This report shall not be reproduced except in full, without the written approval of KES Co., Ltd.  
The results shown in this test report refer only to the sample(s) tested unless otherwise stated.  
The authenticity of the test report, contact [shchoi@kes.co.kr](mailto:shchoi@kes.co.kr)

## EUT Internal Photographs

(Internal View)



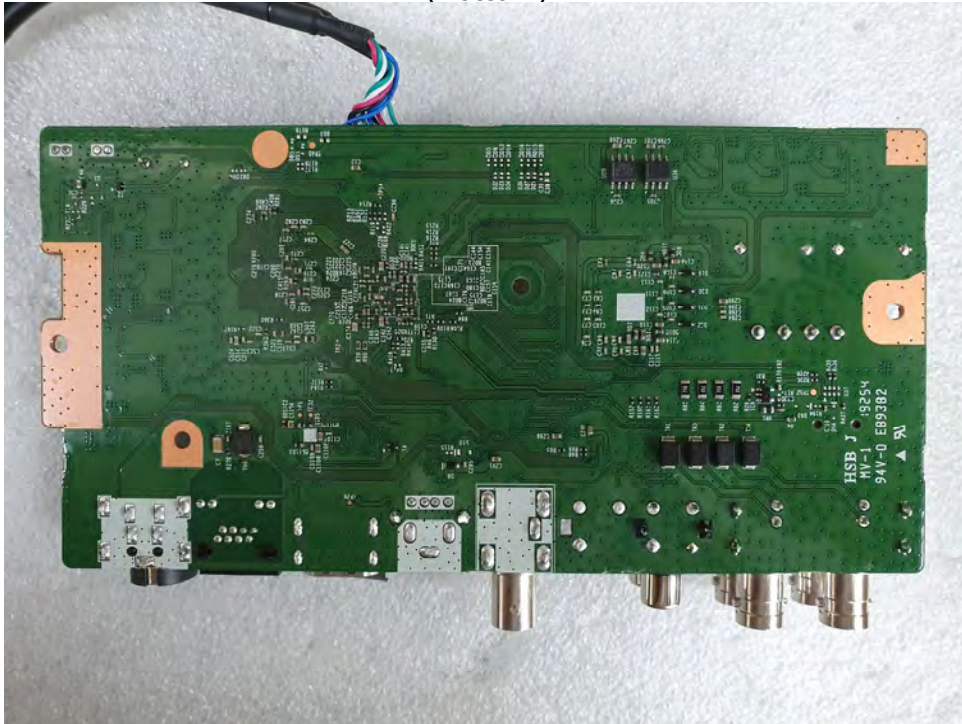
This report shall not be reproduced except in full, without the written approval of KES Co., Ltd.  
The results shown in this test report refer only to the sample(s) tested unless otherwise stated.  
The authenticity of the test report, contact [shchoi@kes.co.kr](mailto:shchoi@kes.co.kr)

## EUT Internal View – Main Board

(Top)



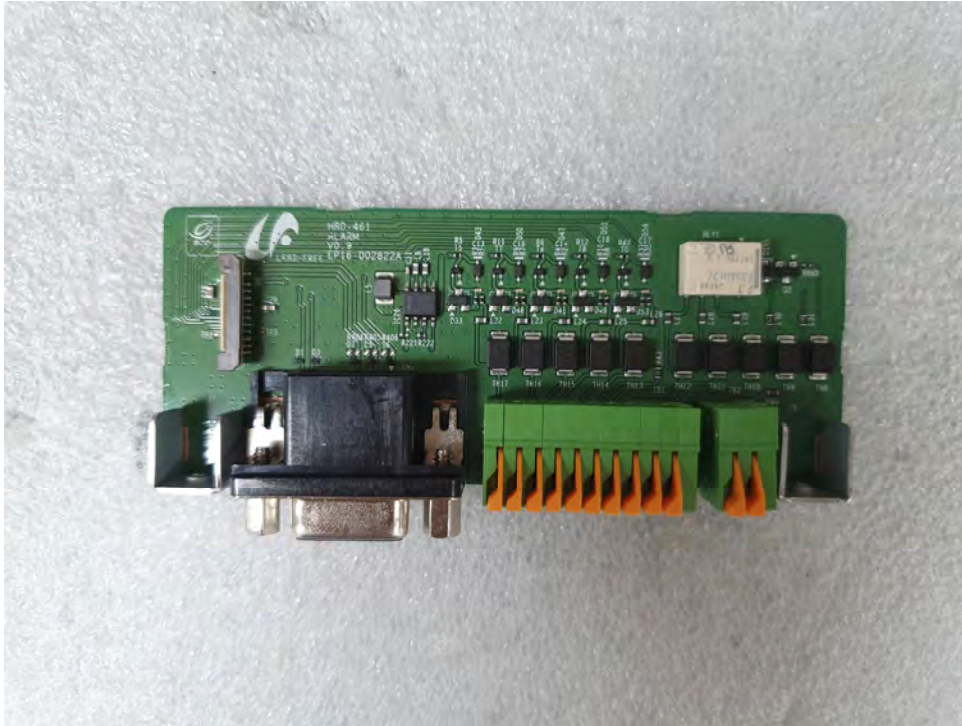
(Bottom)



This report shall not be reproduced except in full, without the written approval of KES Co., Ltd.  
The results shown in this test report refer only to the sample(s) tested unless otherwise stated.  
The authenticity of the test report, contact [shchoi@kes.co.kr](mailto:shchoi@kes.co.kr)

## EUT Internal View – Sub Board 1

(Top)



(Bottom)

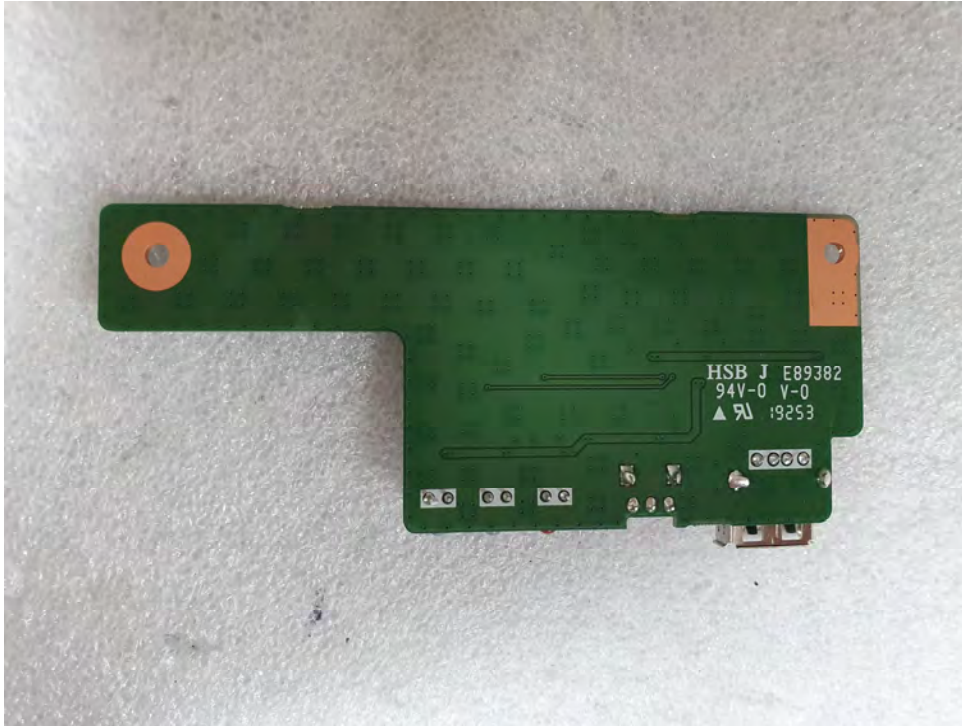


This report shall not be reproduced except in full, without the written approval of KES Co., Ltd.  
The results shown in this test report refer only to the sample(s) tested unless otherwise stated.  
The authenticity of the test report, contact [shchoi@kes.co.kr](mailto:shchoi@kes.co.kr)



## EUT Internal View – Sub Board 2

(Top)

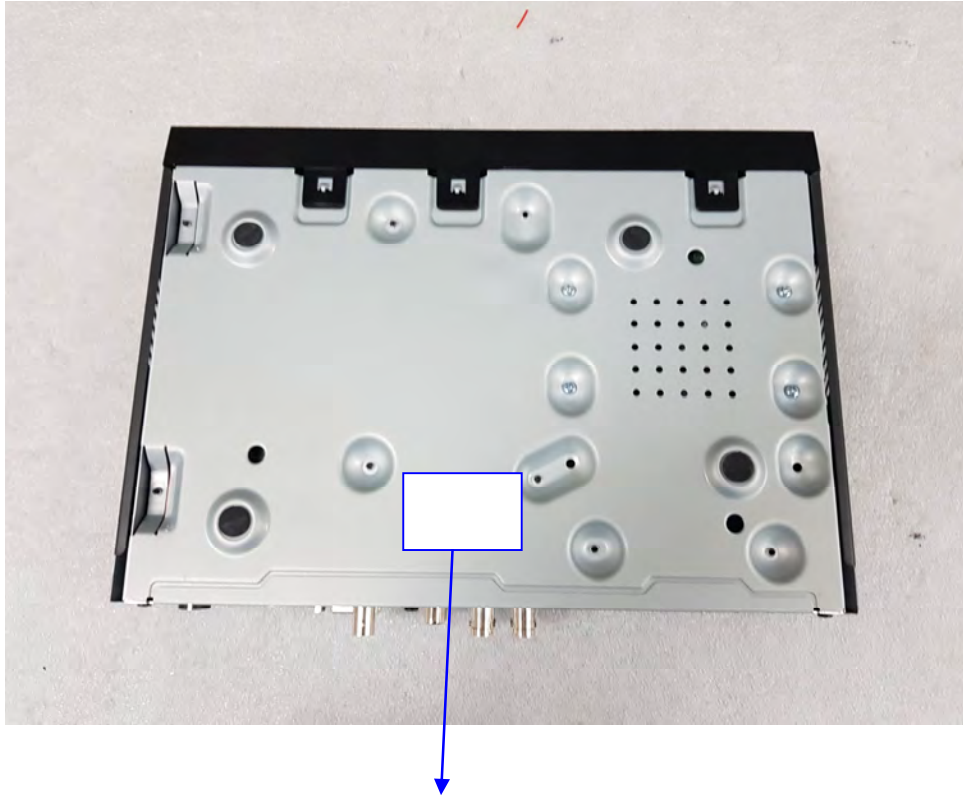


(Bottom)



This report shall not be reproduced except in full, without the written approval of KES Co., Ltd.  
The results shown in this test report refer only to the sample(s) tested unless otherwise stated.  
The authenticity of the test report, contact [shchoi@kes.co.kr](mailto:shchoi@kes.co.kr)

## Label Photographs



この装置は、クラスA情報技術装置です。この装置を家庭環境で使用すると電波妨害を引き起こすことがあります。この場合には使用者が適切な対策を講ずるよう要求されることがあります。 VCCI-A