



EMC TEST REPORT

Test Report No. : KES-E1-18T0051
Date of Issue : Jan. 09, 2018
Product name : Network Camera
Model/Type No. : XNV-6013MN
Variant Mode : -
Applicant : Hanwha Techwin Co., Ltd.
Applicant Address : 1204, Changwon-daero, Seongsan-gu, Changwon-si,
Gyeongsangnam-do, Korea
Manufacturer : Hanwha Techwin (Tianjin) Co., Ltd
Manufacturer Address : No.11 Weiliu Rd, Micro-Electronic Industrial Park, TEDA,
Tianjin, 300385, People's Republic of China
Equipment authorization : Declaration of Conformity
 Verification
 Certification
Date of Receipt : Dec. 21, 2017
Test date : Jan. 04, 2018
Test Results : In Compliance Not in Compliance

Tested by

Tae Yeon, Kim
EMC Test Engineer

Reviewed by

Dong-Hun, Jang
EMC Technical Manager

This test report is not related to KOLAS.



KES Co., Ltd.

3701, 40, Simin-daero 365beon-gil,
Dongan-gu, Anyang-si, Gyeonggi-do, 14057, Korea
Tel: +82-31-425-6200 / Fax: +82-31-424-0450
www.kes.co.kr

Test report No.:
KES-E1-18T0051
Page (2) of (31)

REPORT REVISION HISTORY

Date	Test Report No.	Revision History
Jan. 09, 2018	KES-E1-18T0051	Issued

This report shall not be reproduced except in full, without the written approval of KES Co., Ltd. This document Jul be altered or revised by KES Co., Ltd. personnel only, and shall be noted in the revision section of the document. Any alteration of this document not carried out by KES Co., Ltd. will constitute fraud and shall nullify the document.

This report shall not be reproduced except in full, without the written approval of KES Co., Ltd.
The results shown in this test report refer only to the sample(s) tested unless otherwise stated.



TABLE OF CONTENTS

1.0	General Product Description.....	4
1.1	Test Voltage & Frequency	9
1.2	Variant Model Differences.....	9
1.3	Device Modifications	9
1.4	Equipment Under Test.....	9
1.5	Support Equipments	9
1.6	External I/O Cabling	10
1.7	EUT Operating Mode(s)	10
1.8	Configuration.....	11
1.9	Remarks when standards applied	12
1.10	Calibration Details of Equipment Used for Measurement.....	12
1.11	Test Facility	12
1.12	Laboratory Accreditations and Listings	12
2.0	Test Regulations.....	13
2.1	Conducted Emissions at Mains Power Ports	15
2.2	Radiated Electric Field Emissions(Below 1 GHz)	16
2.3	Radiated Electric Field Emissions(Above 1 GHz)	17
APPENDIX A – TEST DATA.....		18
	Conducted Emissions at Mains Power Ports.....	18
	Radiated Electric Field Emissions(Below 1 GHz)	20
	Radiated Electric Field Emissions(Above 1 GHz).....	21
	Test Setup Photos and Configuration	22
	Conducted Voltage Emissions	22
	Radiated Electric Field Emissions(Below 1 GHz)	23
	Radiated Electric Field Emissions(Above 1 GHz).....	24
	EUT External Photographs.....	25
	EUT Internal Photographs	26



1.0 General Product Description

Main Specifications of EUT are:

Video	
Imaging Device	1/2.8" 2M CMOS
Total Pixels	1945(H) x 1109(V) 2.16M
Effective Pixels	1945(H) x 1097(V) 2.13M
Scanning System	Progressive Scan
Min. Illumination	Color : 0.055 lux(F2.0, 1/30sec) (TBD) B/W : 0Lux(IR LED On)
S / N Ratio	50dB
Video Out	USB : Micro USB type B, 1280x720, for installation
Lens	
Focal Length (Zoom Ratio)	3.6mm Fixed
Max. Aperture Ratio	F2.0
Angular Field of View	H 96.4° V 50.5° D 116° (TBD)
Min. Object Distance	TBD
Focus Control	Manual
Lens Type	Fixed
Mount Type	Board-in type
Pan / Tilt / Rotate	
Pan / Tilt / Rotate range	±5°/0-67°/±90°
Operational	
IR Viewable Length	15m(49.21ft)
Camera Title	Off / On (Displayed up to 85 characters) - W/W : English/Numeric/Special Characters - China : English/Numeric/Special/Chinese Characters - Common : Multi-line (Max 5), Color (Grey/Green/Red/Blue/Black/White), Transparency, Auto Scale by Resolution
Day & Night	Auto (ICR) / Color / B/W / External / Schedule
Backlight Compensation	Off / BLC / HLC(Masking/Dimming), WDR
Wide Dynamic Range	150dB
Contrast	SSDR (Off / On)

This report shall not be reproduced except in full, without the written approval of KES Co., Ltd.
The results shown in this test report refer only to the sample(s) tested unless otherwise stated.



Enhancement	
Digital Noise Reduction	SSNR5 (2D+3D Noise Filter) (Off / On)
Digital Image Stabilization	Off / On
Defog	Auto(input from fog detection) / Manual / Off
Motion Detection	Off/ On(8ea, 8point Polygonal zones), Handover
Privacy Masking	Off / On (32ea, polygonal zones) - Color : Grey/Green/Red/Blue/Black/White - Mosaic
Gain Control	Off / Low / Middle / High
White Balance	ATW / AWC / Manual / Indoor / Outdoor((included Mercury & Sodium)
Contrast	level adjustment
LDC	On/Off (5 levels with Min/Max)
Electronic Shutter Speed	Minimum / Maximum / Anti flicker (2 ~ 1/12,000sec)
Digital PTZ	24X, 'Digital PTZ(Preset, Group)
Flip / Mirror	Flip : On/Off Mirror : On/Off Hallway view : 90°/270°
Video & Audio Analytics	Tampering, Loitering, Directional Detection, Defocus Detection, Fog Detection, Virtual Line, Enter/Exit, Appear / Disappear, Audio Detection, Face Detection, Motion Detection, Digital Auto Tracking, Sound Classification
Alarm I/O	-
Alarm Triggers	Motion Detection, Video & Audio Analytics, Network Disconnect
Alarm events	File upload via FTP, E-Mail Notification via E-Mail local storage(SD/SDHC/SDXC) or NAS recording at Event Triggers External output DPTZ preset
Audio In	Selectable (Mic IN/Line IN), Built-in microphone Supply voltage: 2.5VDC(4mA), Input impedance: approx. 2K Ohm
Audio out	Line out, Max output level: 1 Vrms

This report shall not be reproduced except in full, without the written approval of KES Co., Ltd.
The results shown in this test report refer only to the sample(s) tested unless otherwise stated.



Audio Noise Reduction	Off / On
Pixel Counter	Support
Network	
Ethernet	M12 (10/100BASE-T)
Video Compression Format	H.265/H.264 (MPEG-4 Part 10/AVC) : Main/Baseline/High , Motion JPEG
Resolution	1920x1080, 1280x1024, 1280x960, 1280x720, 1024x768, 800x600, 800x448, 720x576, 720x480, 640x480, 640x360, 320x240
Max. Framerate	H.265/H.264 : Max. 60fps at all resolutions Motion JPEG : Max. 30fps
Smart Codec	Manual Mode (area-based : 5EA)
WiseStream II	Support
Video Quality Adjustment	H.264/H.265 : Target Bitrate Level Control MJPEG : Target Bitrate Level Control
Bitrate Control Method	H.264/H.265 : CBR or VBR MJPEG : VBR
Streaming Capability	Multiple Streaming (Up to 10 Profiles)
Audio Compression Format	G.711 u-law /G.726 Selectable G.726 (ADPCM) 8KHz, G.711 8KHz G.726 : 16Kbps, 24Kbps, 32Kbps, 40Kbps AAC-LC : 48Kbps at 16KHz
Audio Communication	Bi-dierctional (2-Way)
IP	IPv4, IPv6
Protocol	TCP/IP, UDP/IP, RTP(UDP), RTP(TCP), RTCP,RTSP, NTP, HTTP, HTTPS, SSL/TLS, DHCP, PPPoE, FTP, SMTP, ICMP, IGMP, SNMPv1/v2c/v3(MIB-2), ARP, DNS, DDNS, QoS, PIM-SM, UPnP, Bonjour
Security	HTTPS(SSL) Login Authentication Digest Login Authentication IP Address Filtering User access Log 802.1X Authentication (EAP-TLS, EAP-LEAP)
Streaming Method	Unicast / Multicast
Max. User Access	20 users at Unicast Mode

This report shall not be reproduced except in full, without the written approval of KES Co., Ltd.
The results shown in this test report refer only to the sample(s) tested unless otherwise stated.



Edge Storage	SD/SDHC/SDXC 1slot (up to 256 GB) - Motion Images recorded in the SD/SDHC/SDXC memory card can be downloaded. NAS(Network Attached Storage) Local PC for Instant Recording
Application Programming Interface	ONVIF Profile S/G SUNAPI(HTTP API) Open Platform
Webpage Language	English, Korean, Chinese, French, Italian, Spanish, German, Japanese, Russian, Swedish,, Portuguese, Czech, Polish, Turkish, Dutch, Hungarian, Greek
Web Viewer	Supported OS: Windows 7, 8.1, 10, Mac OS X 10.10. 10.11 10.12 Non-plugin Webviewer Supported Browser: Google Chrome 54, MS Edge 38, Mozilla Firefox 49(Window 64bit only) , Apple Safari 9 (Mac OS X only) Plug-in Webviewer Supported Browser : MS Explore 11, Apple Safari 9 (Mac OS X only)
Central Management Software	SmartViewer, SSM
Environmental	
Operating Temperature / Humidity	-30°C ~ +55°C (-22°F ~ +131°F) / Less than 90% RH *Start up should be done at above -20°C
Storage Temperature / Humidity	-50°C ~ +60°C (-22°F ~ +140°F) / Less than 90% RH
Ingress Protection	IP66
Vibration Resistance	EN55011:2009+A1:2010, EN50581:2012,EN50121-3-2:2015, EN61000-4-2:2009 EN61000-4-3:2006+A2:2010, EN61000-4-4:2012, EN61000-4-5:2014 EN61000-4-6:2009, EN50155:2007, NEMA 4X
Vandal Resistance	IK10, NEMA4X
Electrical	
Input Voltage / Current	PoE(IEEE802.3af,Class3)
Power Consumption	TBD
Mechanical	
Color / Material	Ivory / Metal

This report shall not be reproduced except in full, without the written approval of KES Co., Ltd.
The results shown in this test report refer only to the sample(s) tested unless otherwise stated.



KES Co., Ltd.

3701, 40, Simin-daero 365beon-gil,
Dongan-gu, Anyang-si, Gyeonggi-do, 14057, Korea
Tel: +82-31-425-6200 / Fax: +82-31-424-0450
www.kes.co.kr

Test report No.:
KES-E1-18T0051
Page (8) of (31)

Dimension (WxHxD)	99 x 52 x 100
Weight	296g(TBD)

This report shall not be reproduced except in full, without the written approval of KES Co., Ltd.
The results shown in this test report refer only to the sample(s) tested unless otherwise stated.



1.1 Test Voltage & Frequency

Unless indicated otherwise on the individual data sheet or test results, the test voltage and frequency was as indicated below.

Voltage 230 Vac 120 Vac 24 Vac 12 Vdc PoE

Frequency 50 Hz 60 Hz Hz

1.2 Variant Model Differences

LNV-6020RN, LNV-6010RN

1.3 Device Modifications

Not applicable

1.4 Equipment Under Test

Description	Model Number	Serial Number	Manufacturer	Remarks
Network Camera	XNV-6013MN	-	Hanwha Techwin (Tianjin) Co.,Ltd.	E.U.T

1.5 Support Equipments

Description	Model Number	Serial Number	Manufacturer	Remarks
PoE Injector	RP-PEG048I	1308AZ110162	REPOTEC	-
MIC	CMK-303	-	CAMAC	-
Earphone	MDR-Q38	-	SONY	-
Smart Phone	SHV-E210L	R33C71BE64F	SAMSUNG	-
Notebook	X56K	HN11N5151FJ0045W	Hansung computer co., Ltd.	-
AC/DC Adaptor	PA-1900-14	OF91R633487012228	LITE-ON TECHNOLOGY (CHANGZHOU)CO., LTD.	-



1.6 External I/O Cabling

Start		END		Cable Spec.	
Description	I/O Port	Description	I/O Port	Length	Shield
Network Camera (EUT)	RJ-45	PoE Injector	RJ-45	3.00	U
	3.5 mm	MIC	3.5 mm	1.55	U
	3.5 mm	Earphone	3.5 mm	1.00	U
PoE Injector	RJ-45	Notebook	RJ-45	1.00	U
Smart Phone	3.5 mm	Notebook	3.5 mm	1.00	U

* Unshielded=U, Shielded=S

1.7 EUT Operating Mode(s)

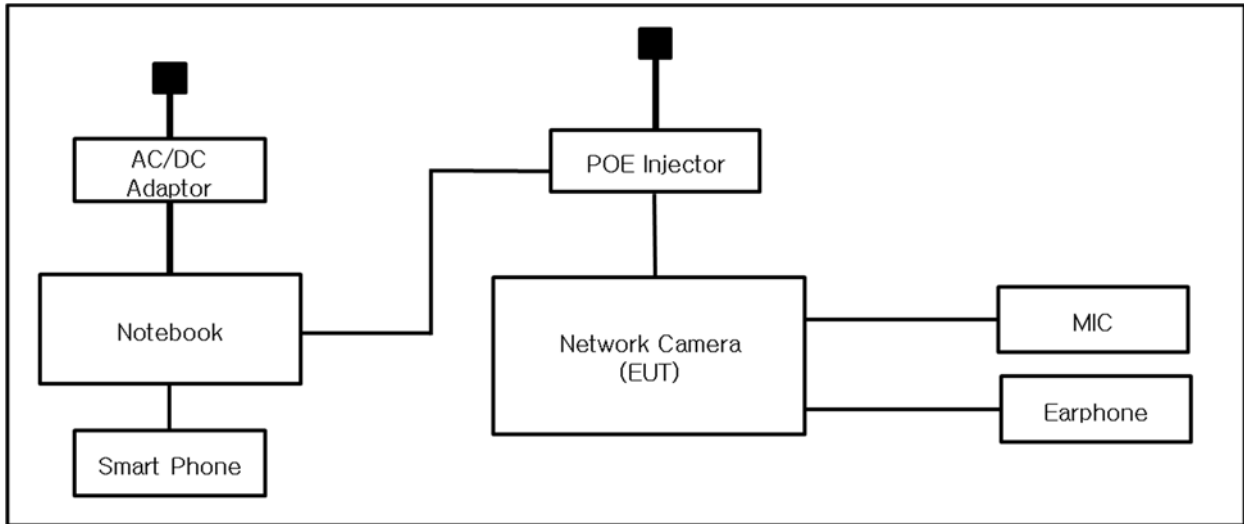
Test mode	operating
PoE	E.U.T Monitoring, Ping Test 1 kHz sound tone input and output confirmation

E.U.T Test operating S/W		
Name	Version	Manufacture Company
Wise WEBVIEW	-	Hanwha Techwin Co., Ltd.

This report shall not be reproduced except in full, without the written approval of KES Co., Ltd.
The results shown in this test report refer only to the sample(s) tested unless otherwise stated.

1.8 Configuration

■ AC Main
□ DC Main



This report shall not be reproduced except in full, without the written approval of KES Co., Ltd.
The results shown in this test report refer only to the sample(s) tested unless otherwise stated.

1.9 Remarks when standards applied

N/A





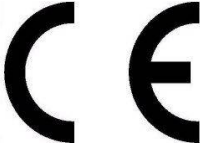

1.10 Calibration Details of Equipment Used for Measurement

Test equipment and test accessories are calibrated on regular basis. The maximum time between calibrations is one year or what is recommended by the manufacturer, whichever is less.

1.11 Test Facility

The measurement facility is located at 473-21 Gayeo-ro, Yeosu-si, Gyeonggi-do, 12658, Korea. The sites are constructed in conformance with the requirements of ANSI C63.4 and CISPR Publication 32.

1.12 Laboratory Accreditations and Listings

Country	Agency	Scope of Accreditation	Logo
USA	FCC	3 & 10 meter Open Area Test Sites and one conducted site to perform FCC Part 15/18 measurements.	
JAPAN	VCCI	Mains Ports Conducted Interference Measurement, Telecommunication Ports Conducted Disturbance Measurement and Radiation 10 meter site, Facility for measuring radiated disturbance above 1 GHz	 R-4308, C-4798, T-2311, G-914
KOREA	MSIP	EMI (10 meter Open Area Test Site and two conducted sites) Radio(3 & 10 meter Open Area Test Sites and one conducted site) EMS (ESD, RS, EFT/Burst, Surge, CS, Magnetic, Dips and interruptions)	 KR0100
Canada	IC	3 & 10 meter Open Area Test Sites and one conducted site	 4769B-1
Europe	CE	EMI (10 meter Open Area Test Site and two conducted sites) Radio(3 & 10 meter Open Area Test Sites and one conducted site) EMS (ESD, RS, EFT/Burst, Surge, CS, Magnetic, Dips and interruptions)	
International	KOLAS	EMI (10 meter Open Area Test Site and two conducted sites) Radio(3 & 10 meter Open Area Test Sites and one conducted site) EMS (ESD, RS, EFT/Burst, Surge, CS, Magnetic, Dips and interruptions)	

This report shall not be reproduced except in full, without the written approval of KES Co., Ltd.
 The results shown in this test report refer only to the sample(s) tested unless otherwise stated.

2.0 Test Regulations

The emissions tests were performed according to following regulations:

EMC – Directive 2014/30/EU

EN 61000-6-3:2011

EN 61000-6-1:2007

EN 61000-6-4:2007 +A1:2011

EN 61000-6-2:2005

EN 55011:2007 +A1:2010

Group 1

Group 2

Class A

Class B

EN 55014-1:2006 +A2:2011

EN 55014-2:1997 +A2:2008

EN 55015:2013

EN 55032:2015

Class A

Class B

EN 55024:2010

EN 50130-4:2011 +A1:2014

EN 61000-3-2:2014

EN 61000-3-3:2013

EN 61326-1:2013



-
- | | | |
|--|---|----------------------------------|
| <input type="checkbox"/> VCCI V-3 / 2015.04 | <input type="checkbox"/> Class A | <input type="checkbox"/> Class B |
| <input type="checkbox"/> AS/NZS:2013 | <input type="checkbox"/> Class A | <input type="checkbox"/> Class B |
| <input checked="" type="checkbox"/> 47 CFR Part 15, Subpart B | | |
| <input checked="" type="checkbox"/> CISPR 22:2009 +A1:2010 | <input checked="" type="checkbox"/> Class A | <input type="checkbox"/> Class B |
| <input type="checkbox"/> ANSI C63.4-2014 | <input type="checkbox"/> Class A | <input type="checkbox"/> Class B |
| <input checked="" type="checkbox"/> IC Regulation ICES-003 : 2016 | | |
| <input checked="" type="checkbox"/> CAN/CSA CISPR 22-10 | <input checked="" type="checkbox"/> Class A | <input type="checkbox"/> Class B |
| <input type="checkbox"/> ANSI C63.4-2014 | | |
| <input type="checkbox"/> RE- Directive 2014/53/EU | | |
| <input type="checkbox"/> EN 301 489-1 V1.9.2 | | |
| <input type="checkbox"/> Equipment for fixed use | | |
| <input type="checkbox"/> Equipment for vehicular use | | |
| <input type="checkbox"/> Equipment for portable use | | |
| <input type="checkbox"/> EN 301 489-3 V1.6.1 | | |
| <input type="checkbox"/> EN 301 489-17 V2.2.1 | | |
| <input type="checkbox"/> EN 60945:2002 | | |

This report shall not be reproduced except in full, without the written approval of KES Co., Ltd.
The results shown in this test report refer only to the sample(s) tested unless otherwise stated.



2.1 Conducted Emissions at Mains Power Ports

Test Date

N/A

Test Location

Electro wave Shieldroom

Test Equipment

Used	Description	Model Number	Manufacturer	Serial Number	Cal. Due
<input type="checkbox"/>	EMI Test S/W	EMC32	R & S	9.12.00	-
<input type="checkbox"/>	EMI TEST RECEIVER	ESR3	R & S	101781	04, 27, 2018
<input type="checkbox"/>	LISN	ENV216	R & S	101787	01, 05, 2019
<input type="checkbox"/>	LISN	ESH2-Z5	R & S	100450	04, 27, 2018
<input type="checkbox"/>	PULSE LIMITER	ESH3-Z2	R & S	101915	11, 27, 2018
<input type="checkbox"/>	LISN	NNBM8124	SCHWARZBECK	8124-1002	08, 07, 2018
<input type="checkbox"/>	LISN	NNBM8124	SCHWARZBECK	8124-1003	08, 07, 2018

Test Conditions

Temperature: °C
Relative Humidity: % R.H.

Frequency Range of Measurement

150 kHz to 30 MHz

Instrument Settings

IF Band Width: 9 kHz

Test Results

The requirements are:

- PASS
- NOT PASS
- NOT APPLICABLE

Remarks

N/A



2.2 Radiated Electric Field Emissions(Below 1 GHz)

Test Date

Jan. 04, 2018

Test Location

OPEN AREA TEST SITE #2 SEMI ANECHOIC CHAMBER #4(10 m)

Test Equipment

Used	Description	Model Number	Manufacturer	Serial Number	Cal. Due
<input checked="" type="checkbox"/>	EMI Test S/W	EP5/RE	TOYO Corporation	6.0.0	-
<input checked="" type="checkbox"/>	EMI TEST RECEIVER	ESU26	R & S	100551	04, 18, 2018
<input checked="" type="checkbox"/>	AMPLIFIER	SCU 01	R & S	100603	11, 27, 2018
<input checked="" type="checkbox"/>	TRILOG-BROADBAND ANTENNA	VULB9163	Schwarzbeck	716	11, 28, 2018

Test Conditions

Temperature: 23,8 °C
Relative Humidity: 41,7 % R.H.

Frequency Range of Measurement

30 MHz to 1 GHz

Instrument Settings

IF Band Width: 120 kHz

Test Results

The requirements are:

- PASS
 NOT PASS
 NOT APPLICABLE

Remarks

See Appendix A for test data.

2.3 Radiated Electric Field Emissions(Above 1 GHz)

Test Date

Jan. 04, 2018

Test Location

SEMI ANECHOIC CHAMBER #4(10 m)

Test Equipment

Used	Description	Model Number	Manufacturer	Serial Number	Cal. Due
<input checked="" type="checkbox"/>	EMI Test S/W	EP5/RE	TOYO Corporation	6.0.0	-
<input checked="" type="checkbox"/>	EMI TEST RECEIVER	ESU26	R & S	100551	04, 17, 2018
<input checked="" type="checkbox"/>	PREAMPLIFIER	8449B	AGILENT	3008A01967	05, 31, 2018
<input type="checkbox"/>	ATTENUATOR	8491A	HP	32173	03, 24, 2018
<input checked="" type="checkbox"/>	DOUBLE RIDGED HORN ANTENNA	SAS-571	A.H.SYSTEM,INC	781	05, 02, 2019

Test ConditionsTemperature: 23,8 °C
Relative Humidity: 41,7 % R.H.**Frequency Range of Measurement**

1 GHz to 6 GHz

Instrument Settings

IF Band Width: 1 MHz

Test Results

The requirements are:

- PASS
 NOT PASS
 NOT APPLICABLE

RemarksSee Appendix A for test data.



KES Co., Ltd.

3701, 40, Simin-daero 365beon-gil,
Dongan-gu, Anyang-si, Gyeonggi-do, 14057, Korea
Tel: +82-31-425-6200 / Fax: +82-31-424-0450
www.kes.co.kr

Test report No.:
KES-E1-18T0051
Page (18) of (31)

APPENDIX A – TEST DATA

Conducted Emissions at Mains Power Ports

HOT LINE

N/A

This report shall not be reproduced except in full, without the written approval of KES Co., Ltd.
The results shown in this test report refer only to the sample(s) tested unless otherwise stated.



KES Co., Ltd.

3701, 40, Simin-daero 365beon-gil,
Dongan-gu, Anyang-si, Gyeonggi-do, 14057, Korea
Tel: +82-31-425-6200 / Fax: +82-31-424-0450
www.kes.co.kr

Test report No.:
KES-E1-18T0051
Page (19) of (31)

NEUTRAL LINE

N/A

◆ Calculation

QuasiPeak[dBuV] / CAverage [dBuV] = Reading Value[dBuV] + Corr. [dB]

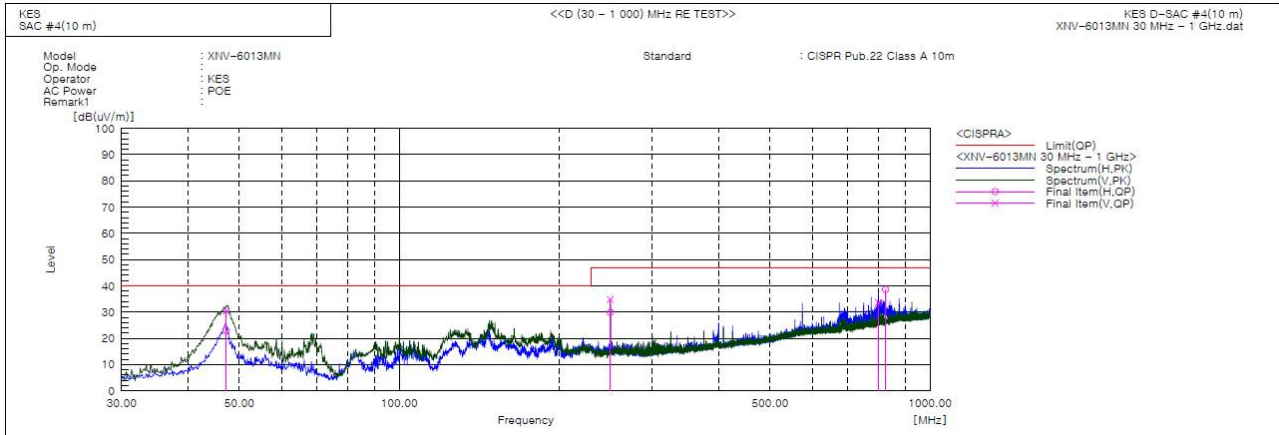
QuasiPeak / CAverage : The Final Value

Reading Value : Not shown in the table.

Corr. : Correction values (LISN FACTOR + (Cable Loss + Pulse Limiter FACTOR))

This report shall not be reproduced except in full, without the written approval of KES Co., Ltd.
The results shown in this test report refer only to the sample(s) tested unless otherwise stated.

Radiated Electric Field Emissions(Below 1 GHz)



Final Result

No.	Frequency [MHz]	(P)	Reading QP [dB(uV)]	c.f [dB(1/m)]	Result QP [dB(uV/m)]	Limit QP [dB(uV/m)]	Margin QP [dB]	Height [cm]	Angle [deg]	Remark
1	47.190	H	51.0	-28.0	23.0	40.0	17.0	394.0	173.0	
2	47.267	V	58.3	-28.0	30.3	40.0	9.7	186.0	208.0	
3	249.992	H	55.3	-25.4	29.9	47.0	17.1	400.0	307.0	
4	250.000	V	60.2	-25.4	34.8	47.0	12.2	100.0	177.0	
5	800.016	V	46.0	-12.5	33.5	47.0	13.5	354.0	208.0	
6	825.011	H	50.2	-11.6	38.6	47.0	8.4	100.0	249.0	

◆ Calculation – SAC #4(10 m)

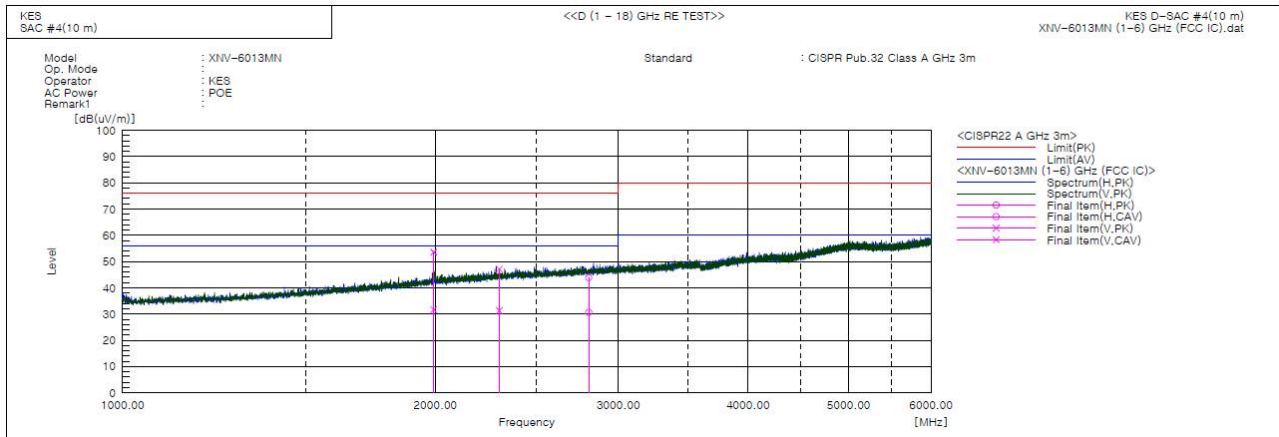
Result(QP) [dB(μV/m)] = (Reading(QP)[dB(μV)] + c.f[dB(1/m)])

Margin(QP)[dB] = Limit[dB(μV/m)] - Result(QP) [dB(μV/m)]

Reading(QP) : Reading value, Result(QP) : Reading value + Factor value

Limit(QP) : Limit value, c.f : (ANT Factor + Cable Loss - Preamp Factor), Margin: Margin value

Radiated Electric Field Emissions(Above 1 GHz)



Final Result

No.	Frequency [MHz]	(P)	Reading PK [dB(uV)]	Reading CAV [dB(uV)]	c.f [dB(1/m)]	Result PK [dB(uV/m)]	Result CAV [dB(uV/m)]	Limit PK [dB(uV/m)]	Limit AV [dB(uV/m)]	Margin PK [dB]	Margin CAV [dB]	Height [cm]	Angle [deg]	Remark
1	1993.063	V	50.9	29.0	2.7	53.6	31.7	76.0	56.0	22.4	24.3	100.0	11.0	
2	2304.650	V	42.5	26.7	4.6	47.1	31.3	76.0	56.0	28.9	24.7	101.0	159.0	
3	2809.644	H	36.8	23.5	7.1	43.9	30.6	76.0	56.0	32.1	25.4	259.0	325.0	

◆ Calculation

$$\text{Result(PK/CAV)} \text{ [dB}(\mu\text{V/m)}] = (\text{Reading(PK/CAV)} \text{ [dB}(\mu\text{V)}] + \text{c.f} \text{ [dB(1/m)}])$$

$$\text{Margin(PK/CAV)} \text{ [dB]} = \text{Limit} \text{ [dB}(\mu\text{V/m)}] - \text{Result(PK/CAV)} \text{ [dB}(\mu\text{V/m)}]$$

Reading(PK/CAV) : Reading value, Result(PK/CAV) : Reading value + Factor value

Limit(PK/CAV) : Limit value, c.f : (ANT Factor + Cable Loss - Preamp Factor), Margin: Margin value

This report shall not be reproduced except in full, without the written approval of KES Co., Ltd.
 The results shown in this test report refer only to the sample(s) tested unless otherwise stated.



KES Co., Ltd.

3701, 40, Simin-daero 365beon-gil,
Dongan-gu, Anyang-si, Gyeonggi-do, 14057, Korea
Tel: +82-31-425-6200 / Fax: +82-31-424-0450
www.kes.co.kr

Test report No.:
KES-E1-18T0051
Page (22) of (31)

Test Setup Photos and Configuration

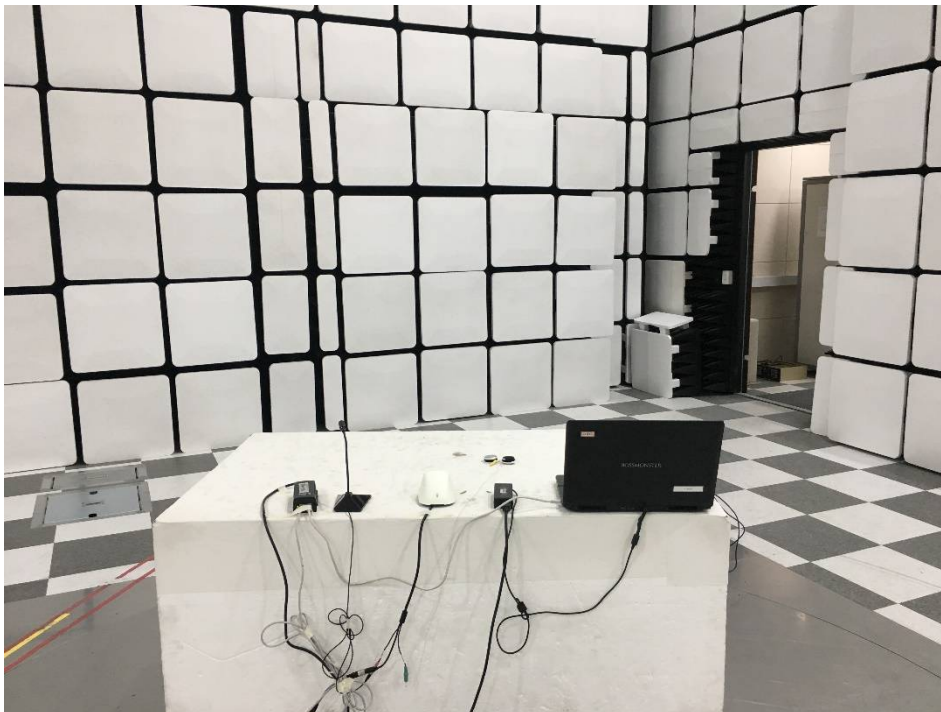
Conducted Voltage Emissions

N/A

N/A

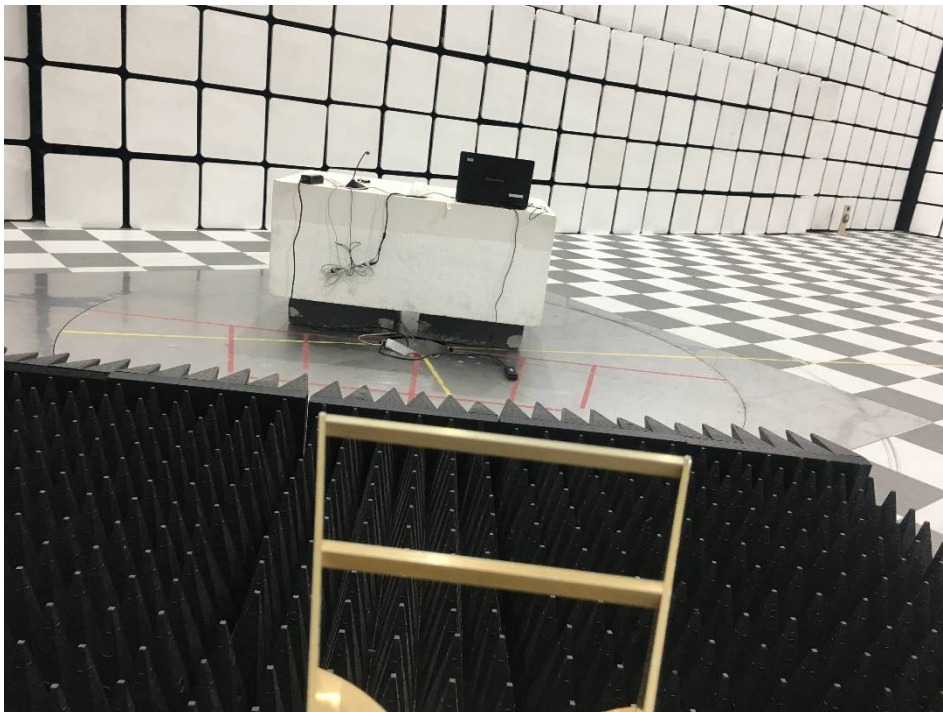
This report shall not be reproduced except in full, without the written approval of KES Co., Ltd.
The results shown in this test report refer only to the sample(s) tested unless otherwise stated.

Radiated Electric Field Emissions(Below 1 GHz)



This report shall not be reproduced except in full, without the written approval of KES Co., Ltd.
The results shown in this test report refer only to the sample(s) tested unless otherwise stated.

Radiated Electric Field Emissions(Above 1 GHz)



This report shall not be reproduced except in full, without the written approval of KES Co., Ltd.
The results shown in this test report refer only to the sample(s) tested unless otherwise stated.

EUT External Photographs

(Top)



(Bottom)



This report shall not be reproduced except in full, without the written approval of KES Co., Ltd.
The results shown in this test report refer only to the sample(s) tested unless otherwise stated.

EUT Internal Photographs

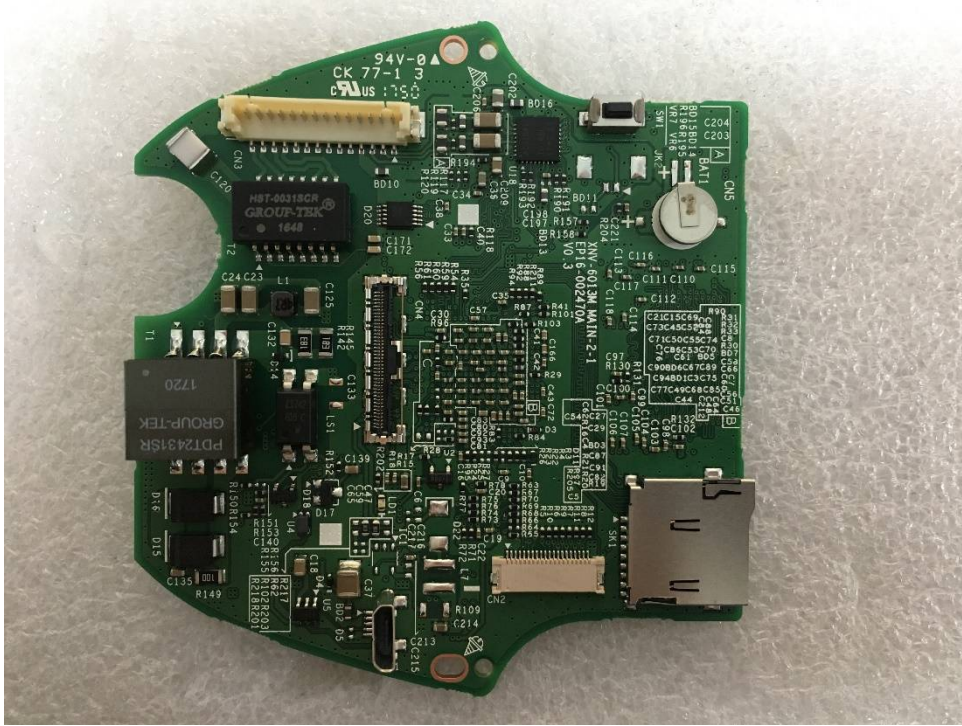
(Internal View)



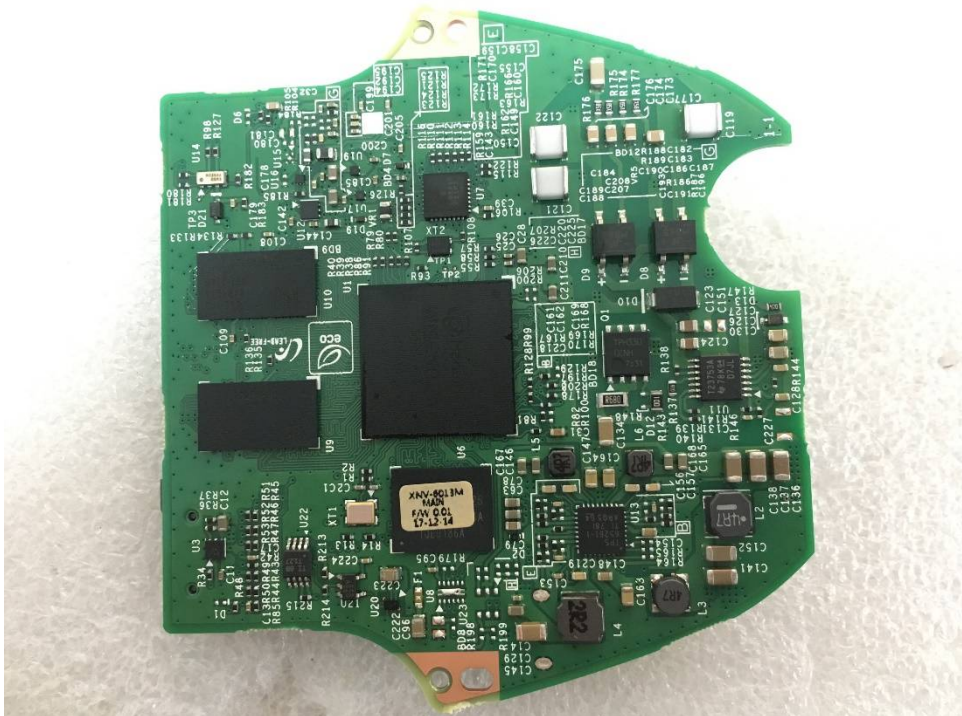
This report shall not be reproduced except in full, without the written approval of KES Co., Ltd.
The results shown in this test report refer only to the sample(s) tested unless otherwise stated.

EUT Internal View – Main board

(Top)



(Bottom)



This report shall not be reproduced except in full, without the written approval of KES Co., Ltd.
The results shown in this test report refer only to the sample(s) tested unless otherwise stated.

EUT Internal View – Sensor board

(Top)



(Bottom)



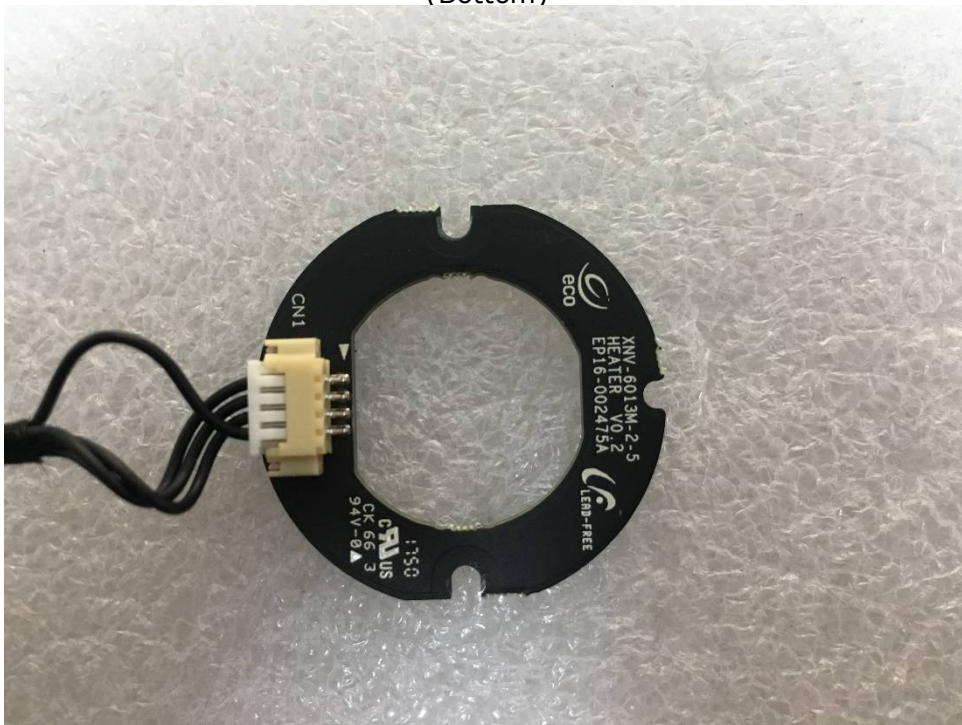
This report shall not be reproduced except in full, without the written approval of KES Co., Ltd.
The results shown in this test report refer only to the sample(s) tested unless otherwise stated.

EUT Internal View – HEATER

(Top)



(Bottom)



This report shall not be reproduced except in full, without the written approval of KES Co., Ltd.
 The results shown in this test report refer only to the sample(s) tested unless otherwise stated.

EUT Internal View – Lens

(Top)

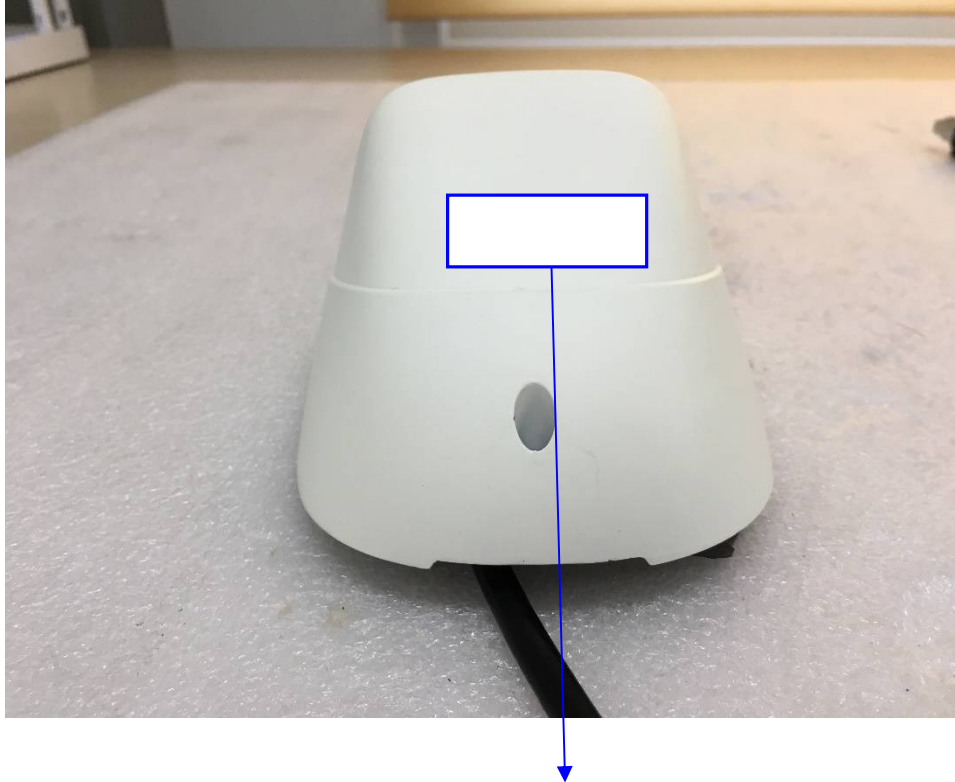


(Bottom)



This report shall not be reproduced except in full, without the written approval of KES Co., Ltd.
The results shown in this test report refer only to the sample(s) tested unless otherwise stated.

Label Photographs



This device complies with part 15 of the FCC Rules. Operation in subject to the following two conditions: (1) This device Sep not cause harmful interference, and (2) this device must accept any interference received, including interference that Sep cause undesired operation.

CAN ICES-3(A) / NMB-3(A)