

WISENET

NETWORK VIDEO DECODER

Quick Manual

SPD-150

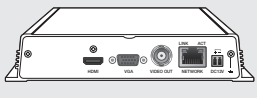


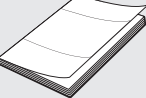
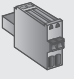

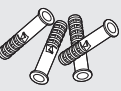
CE

Features

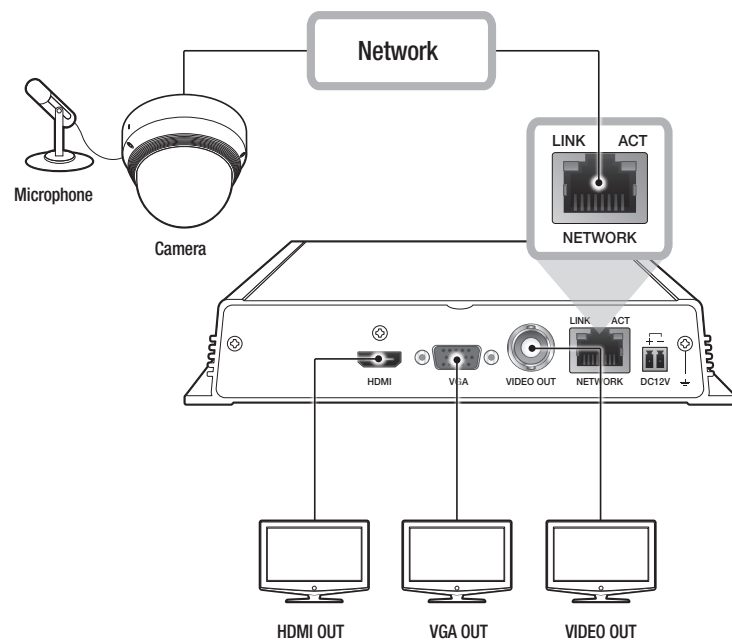
This product can play back the video and audio captured by network cameras.

- User-friendly UI
- Supports a range of 4K camera resolutions (3840X2160, 4096X2160, 4000X3000)
- Outputs a 4K high definition image using HDMI
- Supports ONVIF Profile S standard and RTP / RTSP protocols
- 49 channels simultaneous output (HDMI: 32 channels, VGA: 16 channels, BNC: 1 channel)
- Installation Wizard Function (Easy Setup)

Package Contents

			
SPD-150	Mouse	User Manual CD	User Manual or Quick Manual
			
Terminal block	Taping screw	Plastic Anchor	

Connecting to an external device



Install Wizard

1 Select the language

Select your preferred language.

2 Set Password

Set a password.



- New Password : Input a new password according to the password setting rules.
- Confirm Password : Input the new password again.

2-1. Check the password settings basic guidance texts

8 ~ 9 characters : All combination of English character, Digit, Special character

10 ~ 15 characters : Two combination of English character, Digit, Special character

※ Not allowed to use same characters with ID

※ Not allowed to use 4 or more continuative or repeated characters

3 Set up Network

• Network (Camera) : Connects to the camera and receives the video feed from the camera.

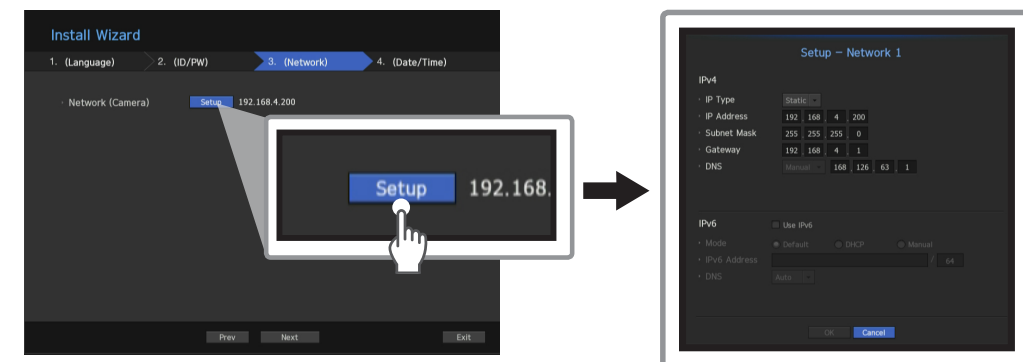
• Network Setup

- IP Type : Choose the network connection method.

- IP Address, Subnet Mask, Gateway, DNS

※ For more details on network settings, refer to the User manual.

▶ To use a simple intranet, click <Next>.



4 Set Date & Time

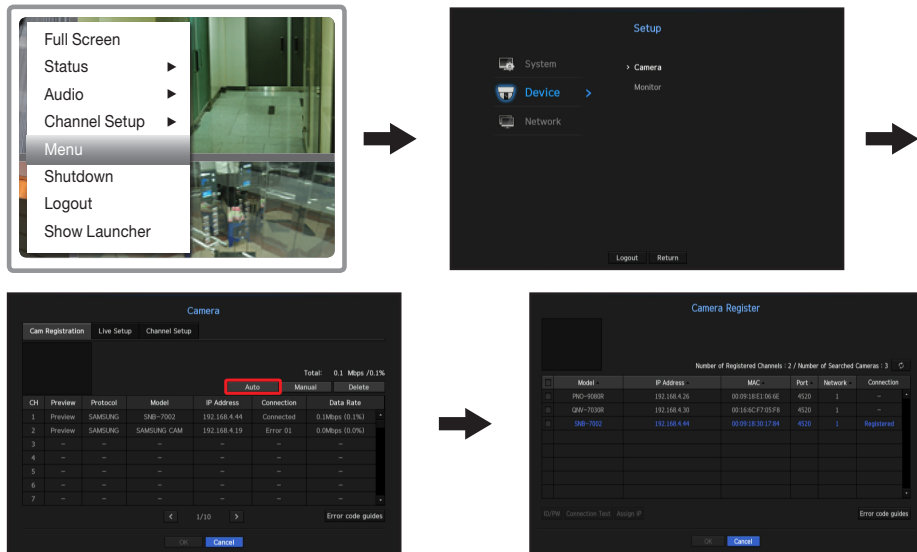
Set the time and date and click the <Finish> button, and the installation will be completed.

※ Unrated or improper power source may cause damage to the system. Ensure that you use only the rated power source before pressing the POWER button.

Configure Live monitoring

While watching registered videos, enter the channel name, collect the desired videos and make a group(Layout settings).

1 Register camera



- Search the cameras from the menu and register the selected cameras.

2 Designate Live channel names

Rename single channel



- Select one channel from the <Channel Setup> menu of the live screen, and click <Single Channel Change> to change the name of the channel.

Set up multi-channels

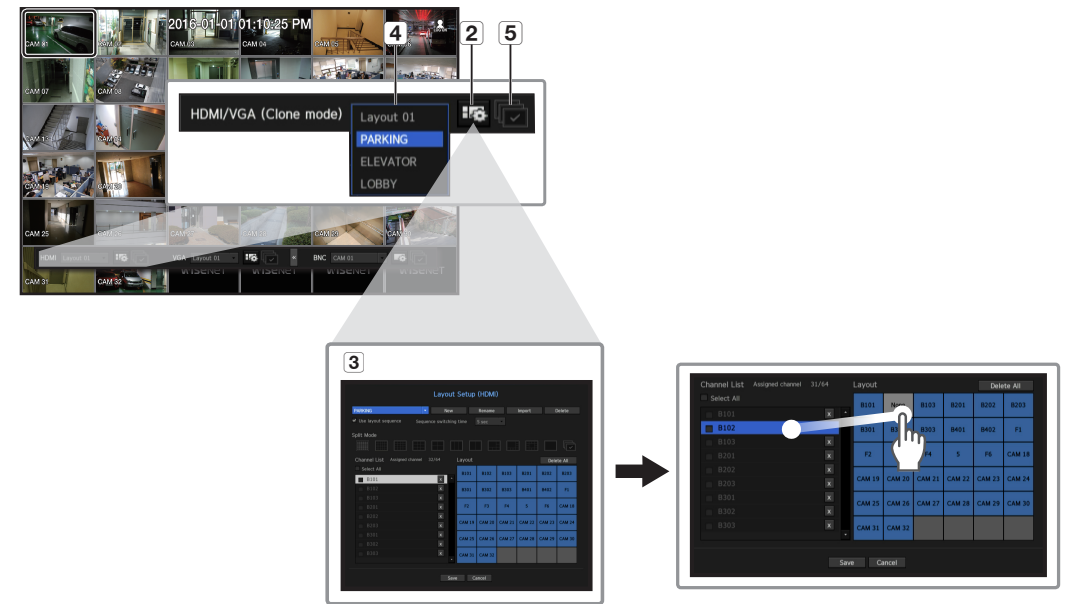
You can set up anything related to video by channel.



- Select the channel you want to change in live and move to <Multi Channel Setup>, and then the focus will shift to the video.

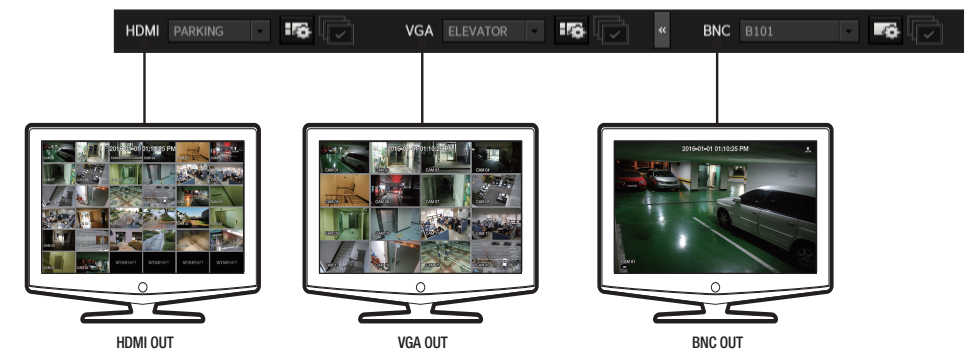
3 Set up layout

You can set up the layout of each channel from the live screen.



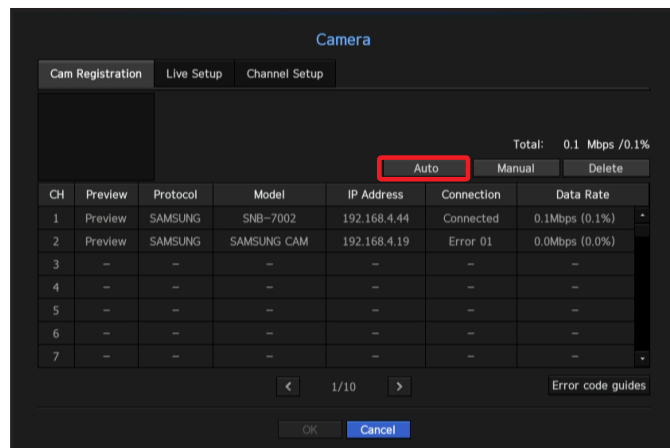
- 1 Designate the channel name related to the video through the single channel or multi-channel settings in the live screen. Please see "Channel Setting".
- 2 Run the layout settings screen at launch.
- 3 Set up layout by composing the split screen mode with channel names. You can set up multiple desired layouts at the same time.
- 4 After settings, you can check it out while changing layout, and change the order of channels by clicking with the mouse in the relevant order.
- 5 It will replay the live screen using different layouts in consecutive order for the sequence setting time.
 - Check <Use layout sequence> in the layout settings window to set up the sequence conversion time.

4 Layout monitoring

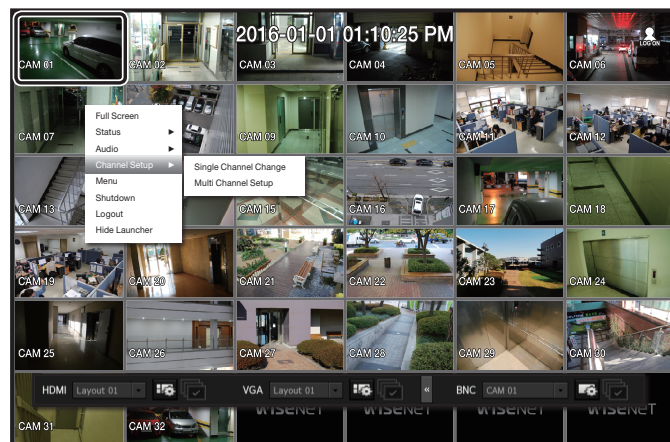


❖ Examples of configuration of live monitoring (Configure channels related to ELEVATOR)

1 Register cameras (up to 64 EA)

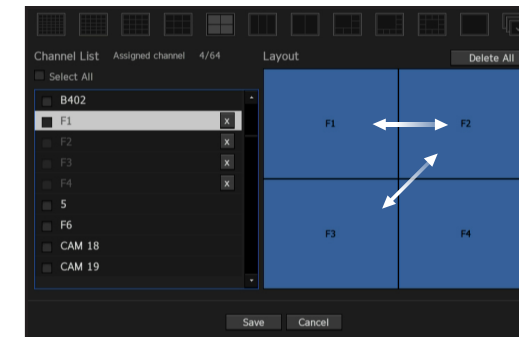
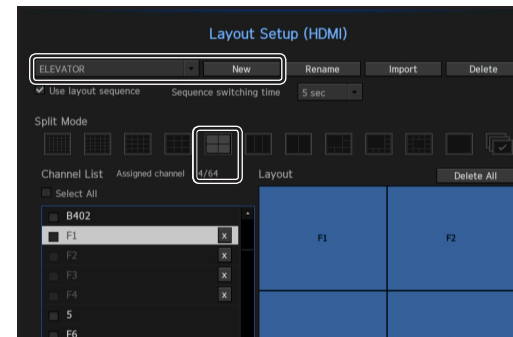


2 Set up the names of channels (Set up names related to the videos of the registered cameras)



ex) If showing elevators by floor
Channel 1: F1, Channel 2: F2, Channel 3: F3...

3 Save after setting up layout (adjust the order after setting up related channels, set up split mode)



ex) Select elevator for layout name, and configure the channels F1, F2, F3, F4, ...

4 Add and adjust location, and start live monitoring

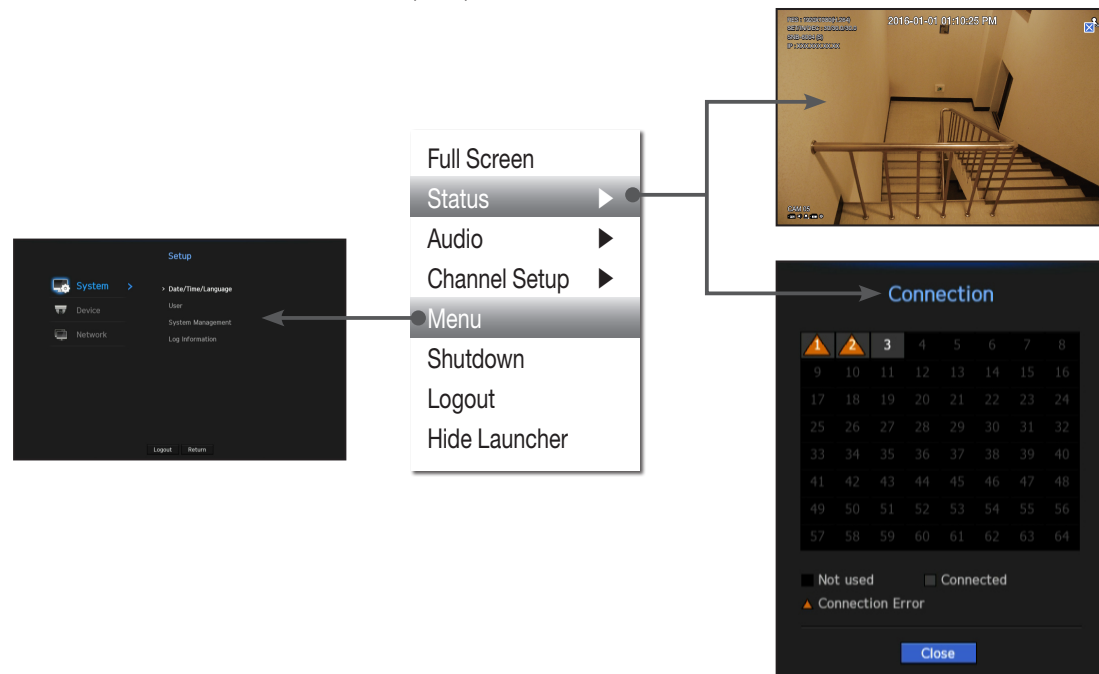


ex) Finish the configuration by readjusting channel location with the configured elevators. After that, monitor them while changing according to the layouts.
▶ ELEVATOR or LOBBY or PARKING ...

Use the basic guide

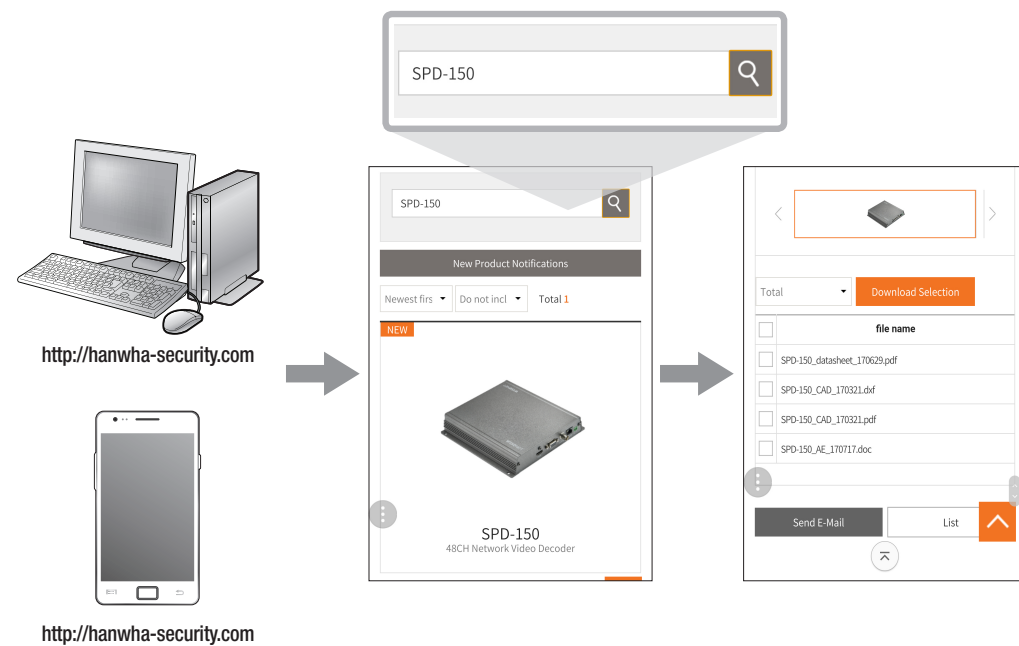
Show shortcut menu

Right-click on the live screen and you can access various functions that Decoder provides. Hover over an icon and a brief definition of term for each function is prompted.



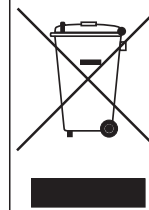
Use product information

You can check product information/manual/firmware information/FAQ through homepage or mobile web on your smartphone.



Hanwha Techwin cares for the environment at all product manufacturing stages, and is taking measures to provide customers with more environmentally friendly products.

The Eco mark represents Hanwha Techwin's devotion to creating environmentally friendly products, and indicates that the product satisfies the EU RoHS Directive.



Correct Disposal of This Product (Waste Electrical & Electronic Equipment)

(Applicable in the European Union and other European countries with separate collection systems)

This marking on the product, accessories or literature indicates that the product and its electronic accessories (e.g. charger, headset, USB cable) should not be disposed of with other household waste at the end of their working life. To prevent possible harm to the environment or human health from uncontrolled waste disposal, please separate these items from other types of waste and recycle them responsibly to promote the sustainable reuse of material resources.

Household users should contact either the retailer where they purchased this product, or their local government office, for details of where and how they can take these items for environmentally safe recycling.

Business users should contact their supplier and check the terms and conditions of the purchase contract. This product and its electronic accessories should not be mixed with other commercial wastes for disposal.



Correct disposal of batteries in this product

(Applicable in the European Union and other European countries with separate battery return systems.)

This marking on the battery, manual or packaging indicates that the batteries in this product should not be disposed of with other household waste at the end of their working life. Where marked, the chemical symbols Hg, Cd or Pb indicate that the battery contains mercury, cadmium or lead above the reference levels in EC Directive 2006/66. If batteries are not properly disposed of, these substances can cause harm to human health or the environment.

To protect natural resources and to promote material reuse, please separate batteries from other types of waste and recycle them through your local, free battery return system.

Head Office

6, Pangyo-ro 319 beon-gil, Bundang-gu, Seongnam-si,
Gyeonggi-do, 463-400 Rep. of KOREA
Tel : +82.70.7147.8753 Fax : +82.31.8018.3740
<http://hanwha-security.com>

Hanwha Techwin America

500 Frank W. Burr Blvd. Suite 43 Teaneck, NJ 07666
Toll Free : +1.877.213.1222 Direct : +1.201.325.6920
Fax : +1.201.373.0124
www.hanwhasecurity.com

Hanwha Techwin Europe

Heriot House, Heriot Road, Chertsey, Surrey, KT16 9DT, United Kingdom
Tel : +44.1932.57.8100 Fax : +44.1932.57.8101
www.hanwha-security.eu

Hanwha Techwin(Tianjin) Co.Ltd

No.11, Weiliu Rd., Micro-Electronic Industrial Park, Jingang Road Tianjin 300385, China
Tel : +86.22.2388.7788
www.hanwha-security.cn

Hanwha Techwin Middle East FZE

JAFZA View 18, 20th floor, office 2001, 2002, 2003, Downtown Jebel Ali,
Dubai, United Arab Emirates
<http://hanwha-security.com>
