

# Hanwha - WRR-5301/5501 - Field Replacement Unit - Fan

This document will demonstrate how to replace and install Fans for the WRR-5301/5501 units.

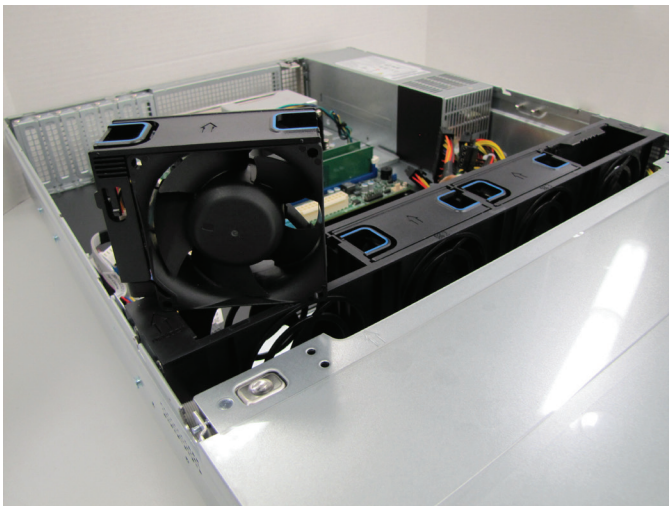
## Step 1 - Prepare for Hard Drive Replacement



***Before removing the lid and performing any work inside the chassis, please ensure:***

- You have powered down the unit via the Windows interface;
- The power cable has been removed from the unit;
- You are properly grounded. Simple ways to ground yourself are:
  - Wearing an ESD strap.
  - Making contact with a grounded portion of the chassis.

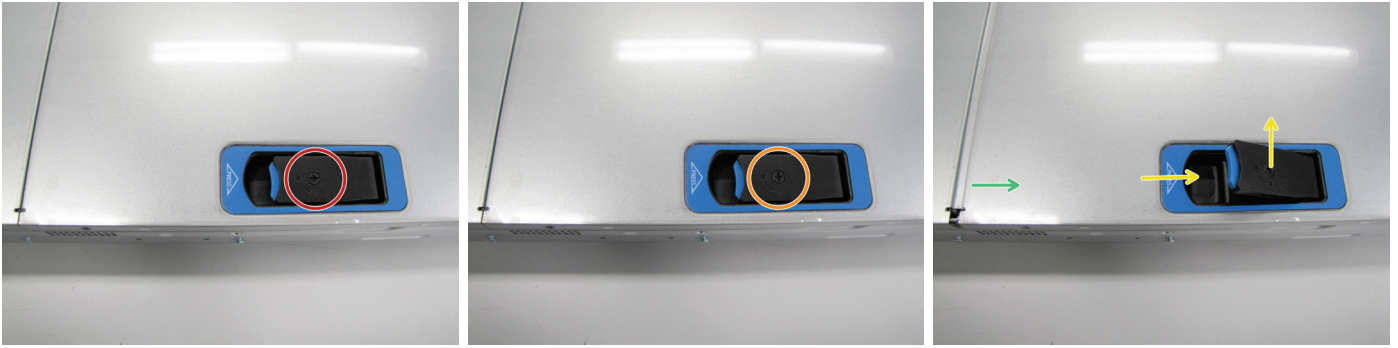
## Step 2 - Contents of FRU Replacement Kit



- The kit will contain:
  - (1) Replacement Chassis Fan
  - (1) FRU Guide PDF

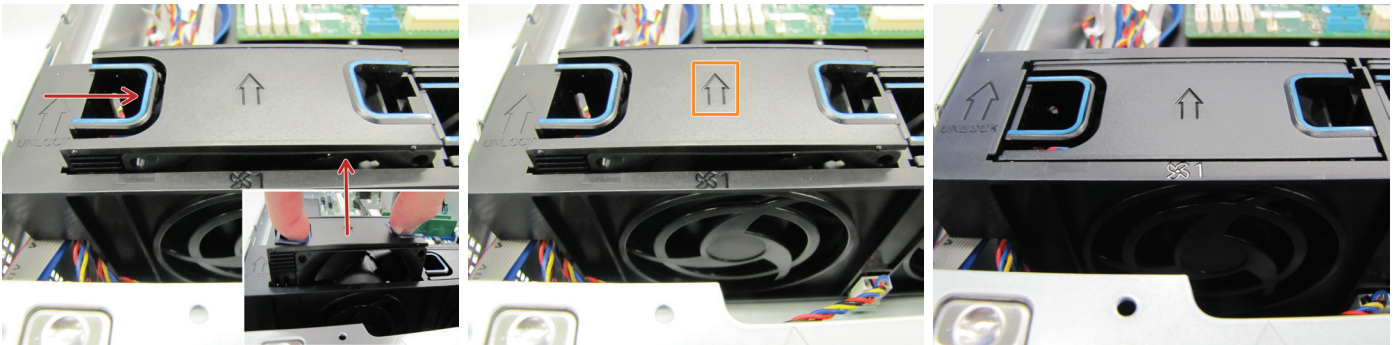


## Step 3 - Remove the Lid



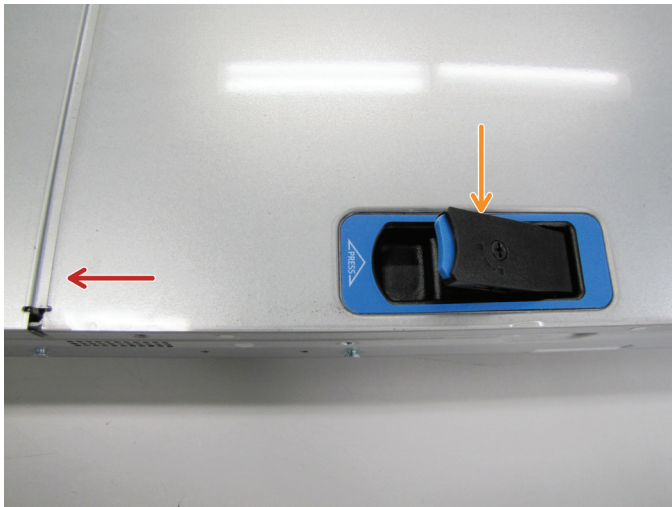
- Unlock the lid to remove it.
  - ① Use a small flathead or Phillips screwdriver.
- **Turn the lock counter clock-wise to unlock.**
  - ① The lid is in the **unlocked** position when the **long** slot is pointing at the open padlock engraving.
- Press the blue button in, and lift up to release the lid.
- The lid will slide away from the chassis and can be removed.

## Step 4 - Fan Removal/Installation



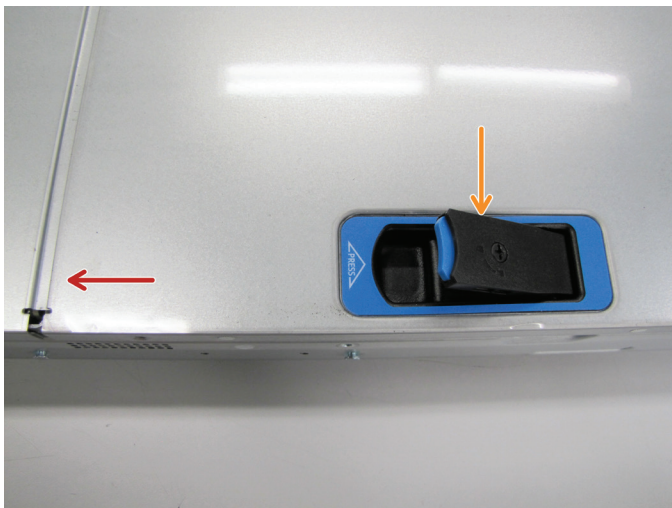
- To remove the Fan:
  - Press the clamp in the direction shown, and lift upward to remove the fan.
- To install a new fan follow these guidelines:
  - Also note the arrow on the top of the fan and **ensure it is facing the correct direction for the air-flow** (away from the hard drives, into the chassis).
- Once these guidelines are met, align the fan and as it slides into place, press down on it to ensure it has locked back into place.

## Step 5 - Fan Removal/Installation 2



- Adding an additional Fan:
  - Slot 4 contains a Fan Blank.
  - To remove the blank, slide it up and out of the slot.
  - Slide the additional fan into place and press down until it clicks into its locked position, as shown above.

## Step 6 - Replace the Lid



- Once placed correctly on the chassis, the lid will slide into place.
- Press the latch down to lock the lid in place.
- Using a small flat head or Phillips screwdriver, turn **clock-wise** to **lock** the latch.