

WISENET mobile

User Guide

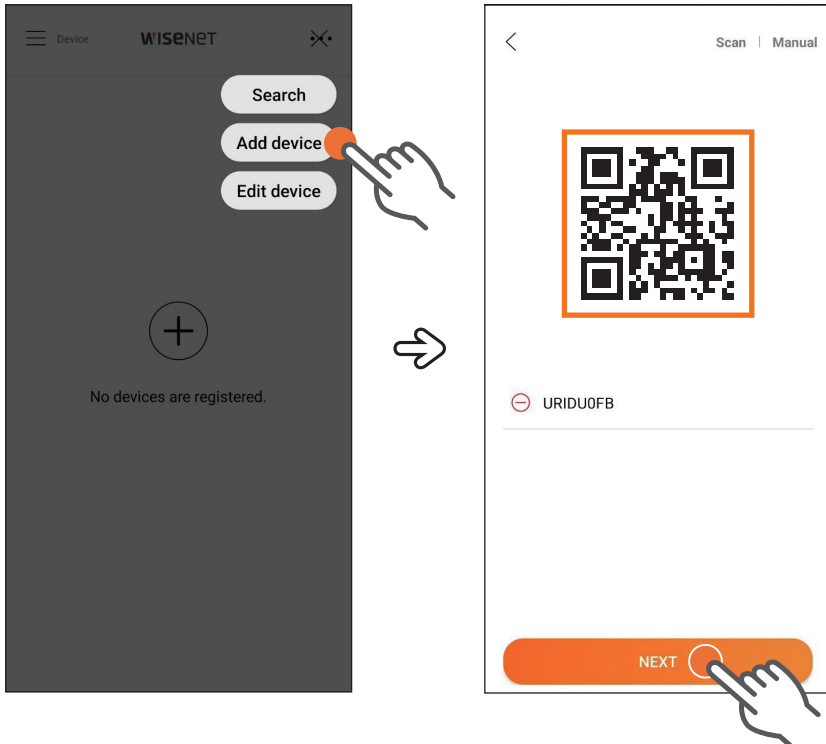


REGISTRATION

New device registration


Registering a new device

QR code registration

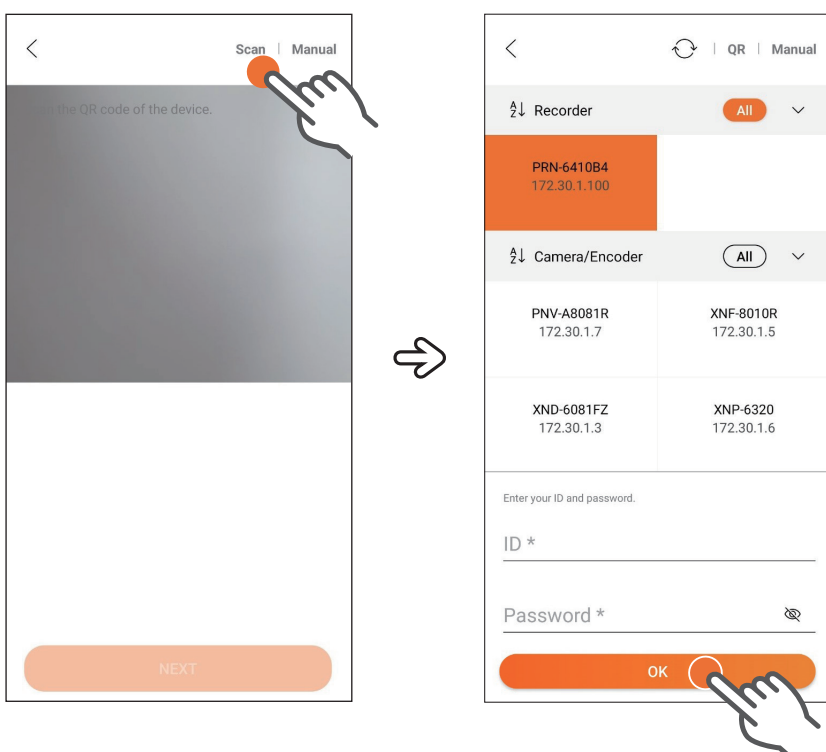


For devices with a QR code


 You can check the QR code in **Setup > Network > DDNS & P2P**.

1. On the top-right of the main screen, select **••• > Add device**.
2. Scan the QR code and select **Next**.
 - If you register multiple devices by scanning their QR codes, the QR codes are registered in the list.
 - If you want to delete a QR code, select  on the left of the QR code.
3. Enter the ID and password of the device, and select **OK**.
 - Device registration is complete.
 - Devices sharing the same ID and password can be registered simultaneously.

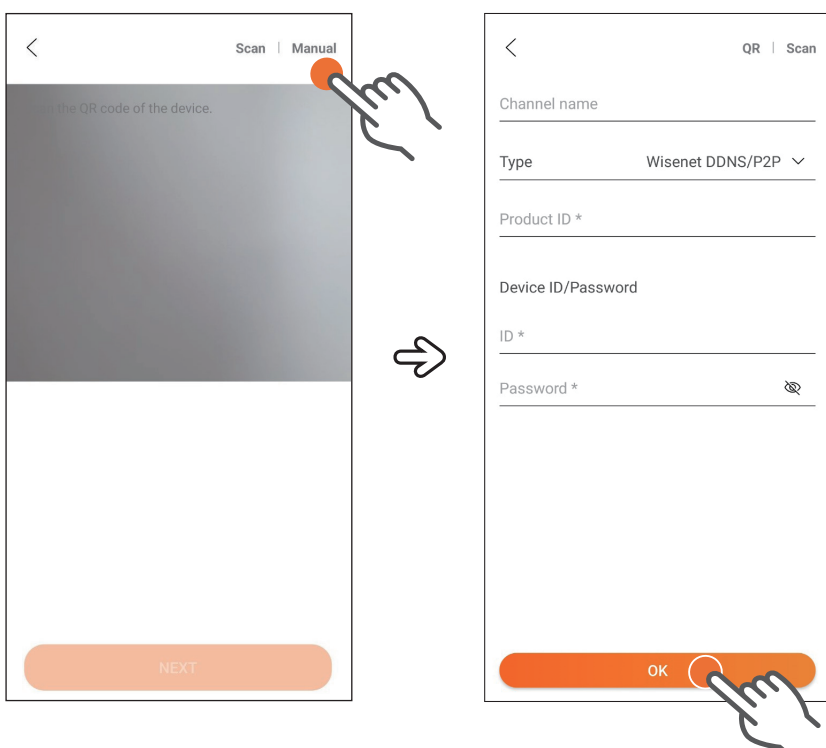
Scan registration




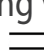
For a smartphone and a device on the same Wi-Fi network

1. On the top-right of the main screen, select **••• > Add device**.
2. Select **Scan**.
 - A list of devices automatically detected will appear.
 - By selecting , you can change the sorting order of devices.
3. Select the device you want to register.
4. Enter the ID and password of the device, and select **OK**.
 - Device registration is complete.
 - Devices sharing the same ID and password can be registered simultaneously.

Manual registration



1. On the top-right of the main screen, select **••• > Add device**.
2. Select **Manual**.
3. Enter the login information and select **OK**.
 - Device registration is complete.
 - You can select the channel you want, available for your device. Select the channel and select **OK**.

 Incoming video transmission may be blocked depending on your carrier network provider. If the video is unavailable, please refer to  **Setup > FAQ**.



DEVICE LIST

Device list

Device list screen

You can open the menu.

If you select the device name, the channels of the device will be displayed in the quad view live monitoring screen.

If you select the camera group name, the channels of the camera group will be displayed in the quad view live monitoring screen. (The maximum number of cameras in one group is 16.)

Camera name

You can change the size of the video thumbnail.

1 Search

2 Add device

3 Edit device

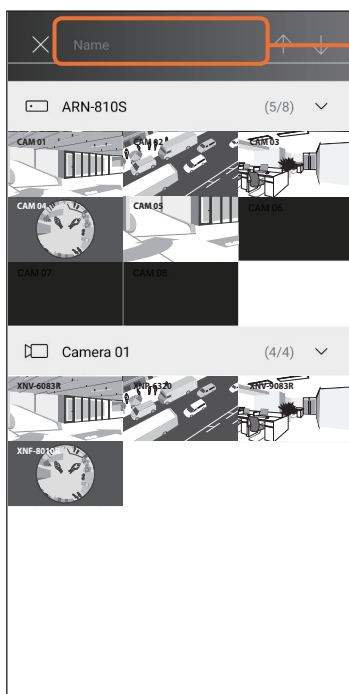
Select one to go to the feature.

Expands/collapses the channel list (The status of the device or connection information is updated when opening the channel list.)

Number of connected channels/Number of registered channels (If you press and hold the channel on the channel list, it will change to the ALL button.)

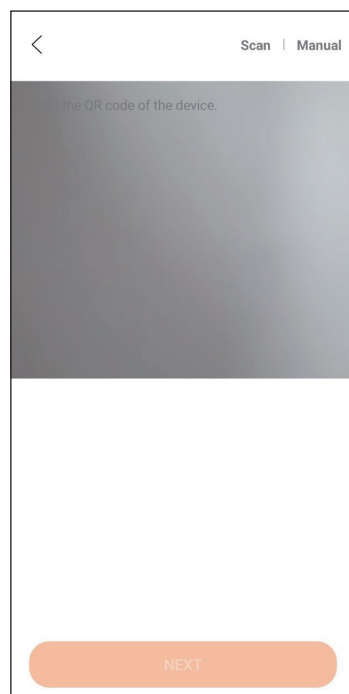
Go to > **Setup** > **Screen mode** > **Dark theme** and turn it on or off to change the color theme of Wisenet mobile.

1 Search

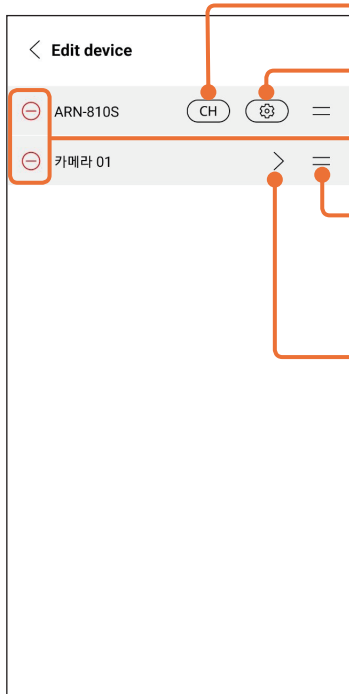


Enter keywords

2 Add device



3 Edit device

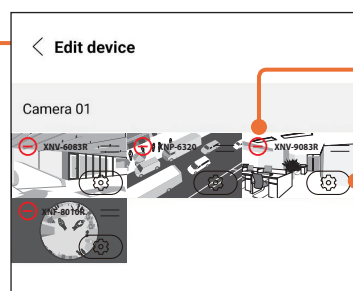


You can add or delete the channels of the recorder.

You can change the name and login information of the recorder.

You can delete the device that has been registered.

You can change the order of devices in the list. Press and hold to change the order.



You can delete the camera that has been registered.

You can change the name and login information of the camera.



MY CHANNEL LIST

My channel list

My channel screen

You can open the menu.

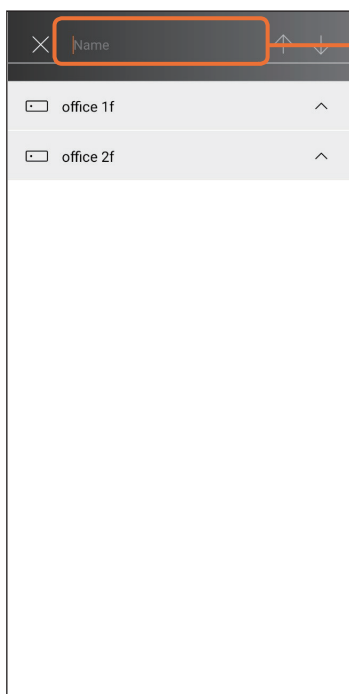
If you select My Channel name, the channels of My Channel will be displayed in the quad view live monitoring screen.

List of my registered channels

Select one to go to the feature.

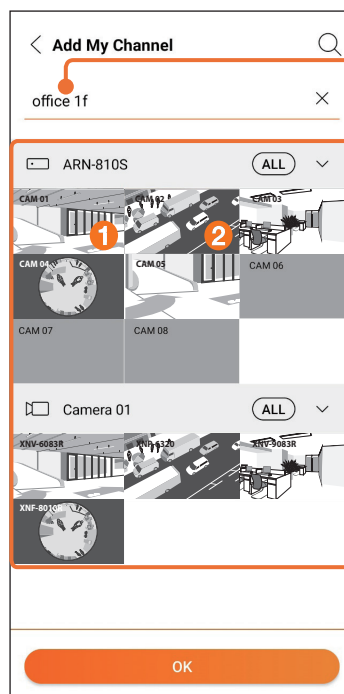
Expands/collapses the channel list

1 Search



Enter keywords

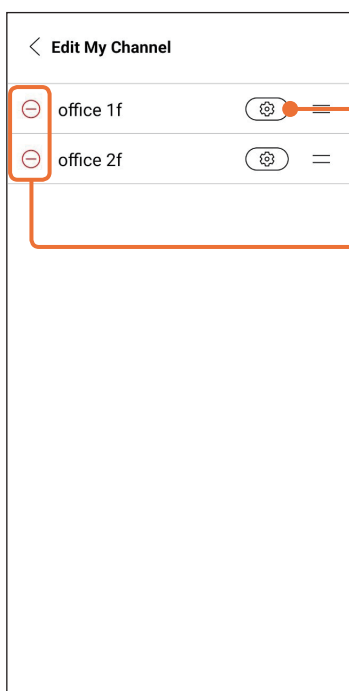
2 Add my channel



Sets my channel name (layout name)

Selects devices to add as my channels (selects all or a certain channel)

3 Edit my channel



Deletes my channel

Renames my channel (layout name)

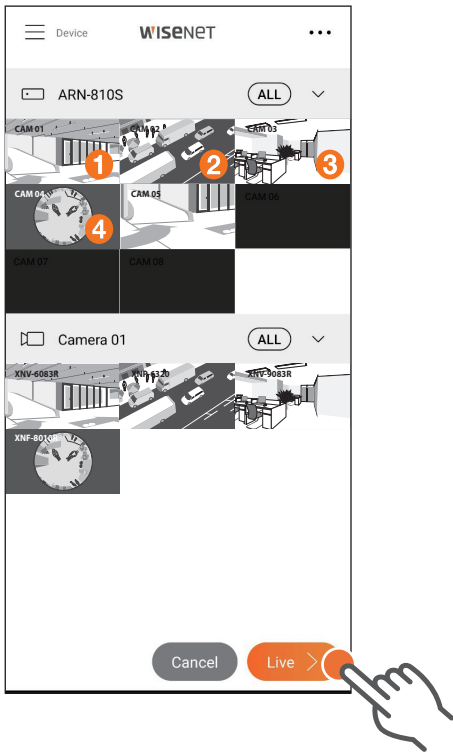
Edits channel order (Tap a channel to select or deselect it.)



LIVE MONITORING

Live monitoring

Live monitoring screen and button description



1 channel live mode

If you select a channel from the channel list, you will move to the live monitoring screen.

Multi-channel live mode

1. Press and hold a channel for live monitoring. The **ALL** button is displayed.
2. Select the **ALL** button to select from all channels or tap to select the channel that you want.
 - Tap the selected channel to deselect it.
3. Select **Live** to go to Live monitoring screen.

Portrait mode

Previous screen - Points to the back arrow icon.

1/2 - Points to the channel count indicator.

Selects a split screen - Points to the grid icon. A legend shows icons for 1, 2, 3, and 4 screen splits.

Adds to my channel - Points to the star icon. A dialog box is shown with the text "Enter the name for My Channel" and an "OK" button.

Switches to landscape mode - Points to the vertical split screen icon.

Pauses a live video - Points to the pause icon.

Channel list - Points to the channel list at the bottom. Text: "You can check the channel list of devices and camera groups where the channels currently being monitored are included in. If you want the change the monitoring channel, select a channel from the list."

Event list - Points to the event list at the bottom. Text: "You can check the event list of the channel currently being monitored. Also, you can filter or bookmark event items. If you want to play an event, select it from the list."

You can select the one/quadrant/nine/sixteen-screen modes depending on the selected channels. - Points to the grid icon legend.

If you enter a My channel name and select OK, the selected channel is registered in My Channel. To check my channel list, select My channel. - Points to the star icon.

Landscape mode

Double-tap to change to 1 channel mode. - Points to a hand icon double-tapping the screen.

Hide/Show screen icons - Points to the magnifying glass icon. Text: "This icon is only displayed in landscape mode. In portrait mode, you can tap the screen to hide or show the icon."

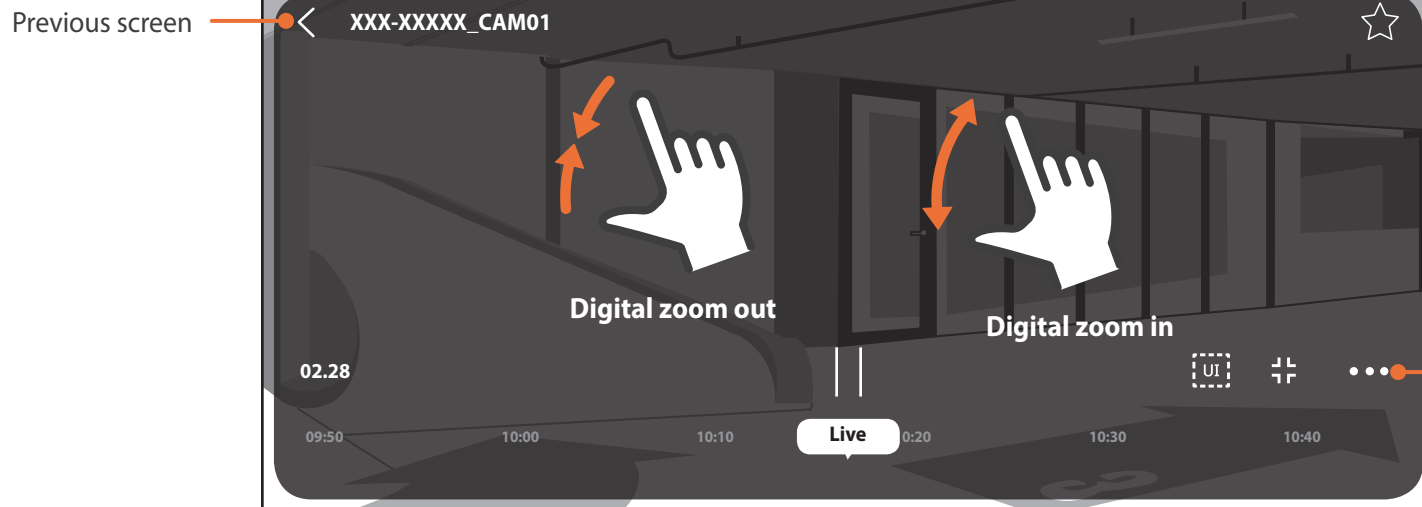
Switches to portrait mode - Points to the vertical split screen icon.



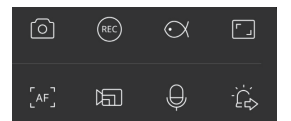
LIVE MONITORING

1 channel mode

1 channel mode screen and button description



See function buttons

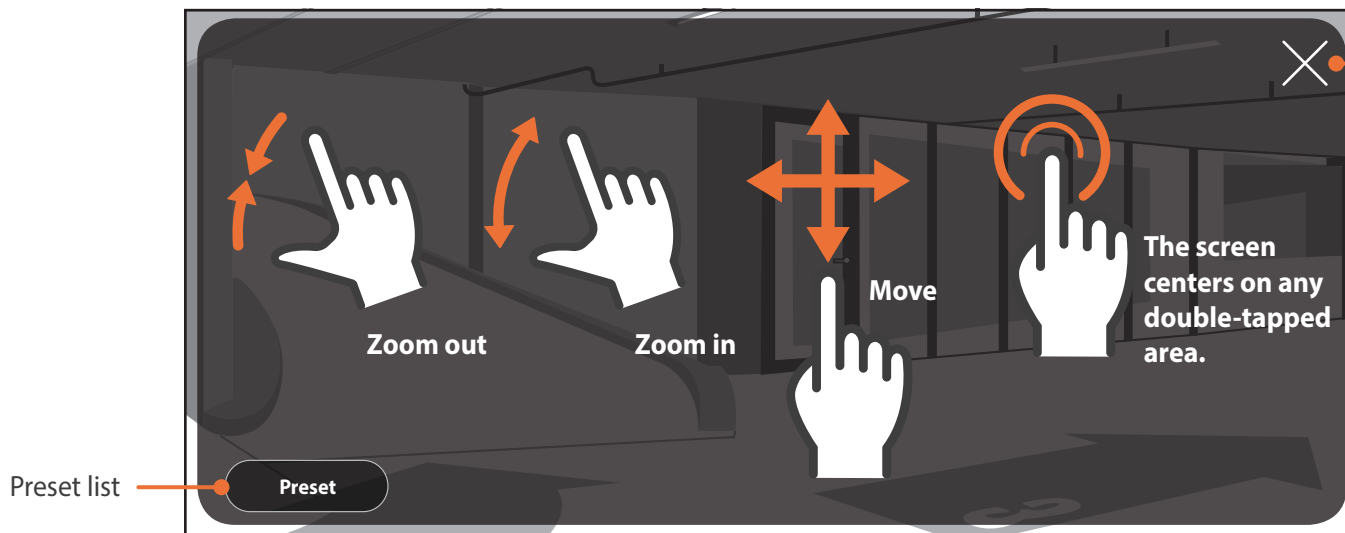


Select one to go to the feature.

- Saves the current screenshot
- Manually records video
- Switches to Fisheye mode
- Switches screen ratio (original ratio ↔ full screen)
- Switches to PTZ mode
- Adjusts auto focus
- Selects profile
- Two-way talk
- Controls alarm output

Available features will vary depending on the model.

PTZ mode

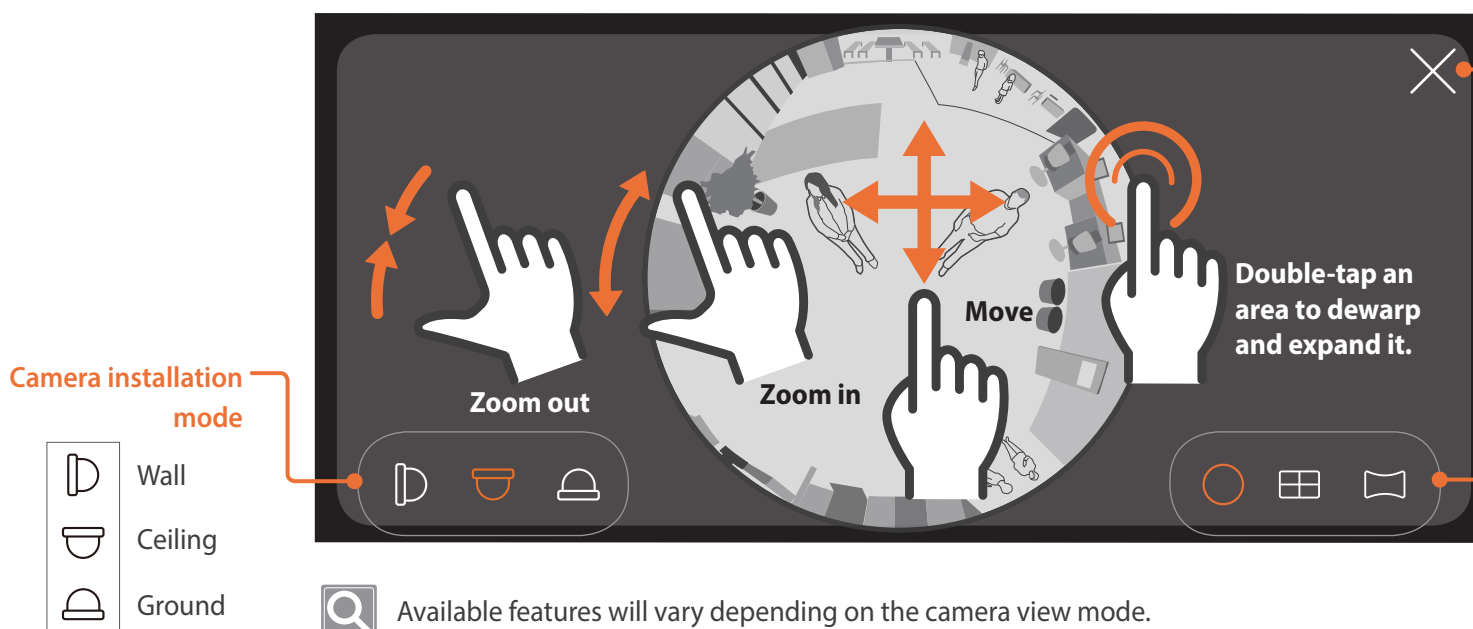


Deactivates PTZ mode

Available features will vary depending on the model.

- For DVR, (Near) and (Far) buttons are displayed instead of preset.
- You can drag the screen to move to where you want.
- If you keep your finger pressed down as you drag, you will keep moving in that direction.
- In the portrait mode, you can use to fine-tune the direction of the camera.

Fisheye mode



Deactivates fisheye mode

Camera view mode

- Fisheye
- Quad
- Panorama

Available features will vary depending on the camera view mode.



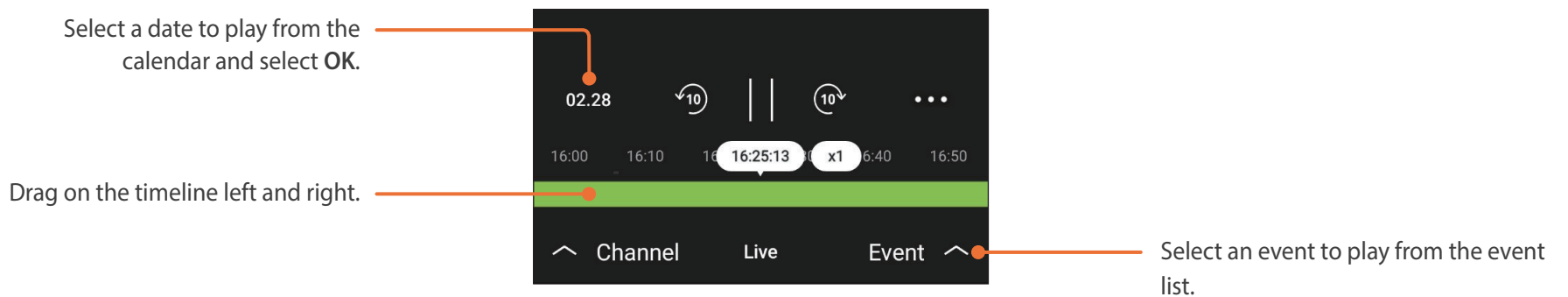
SEARCH & PLAYBACK

Search & Playback

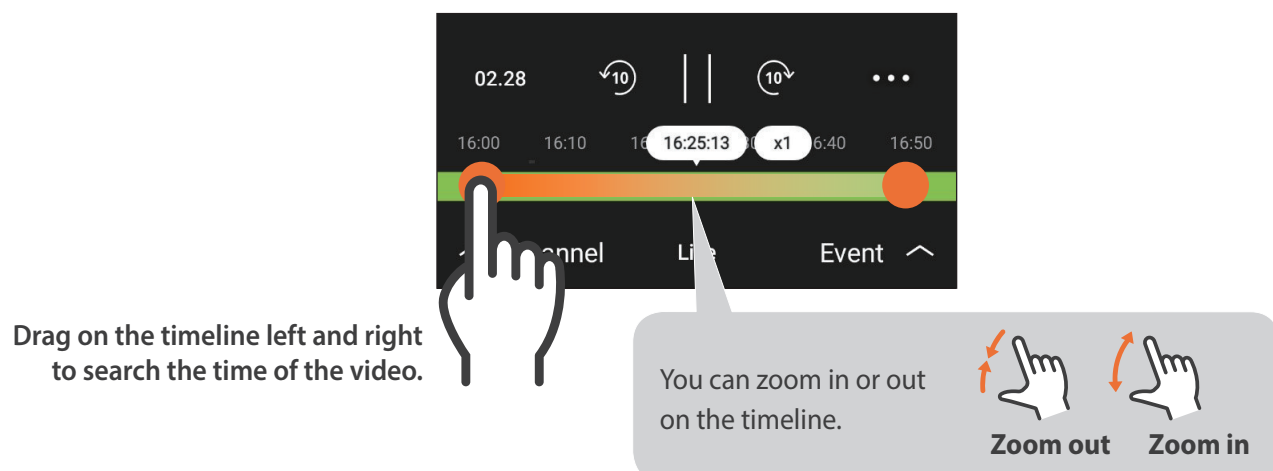
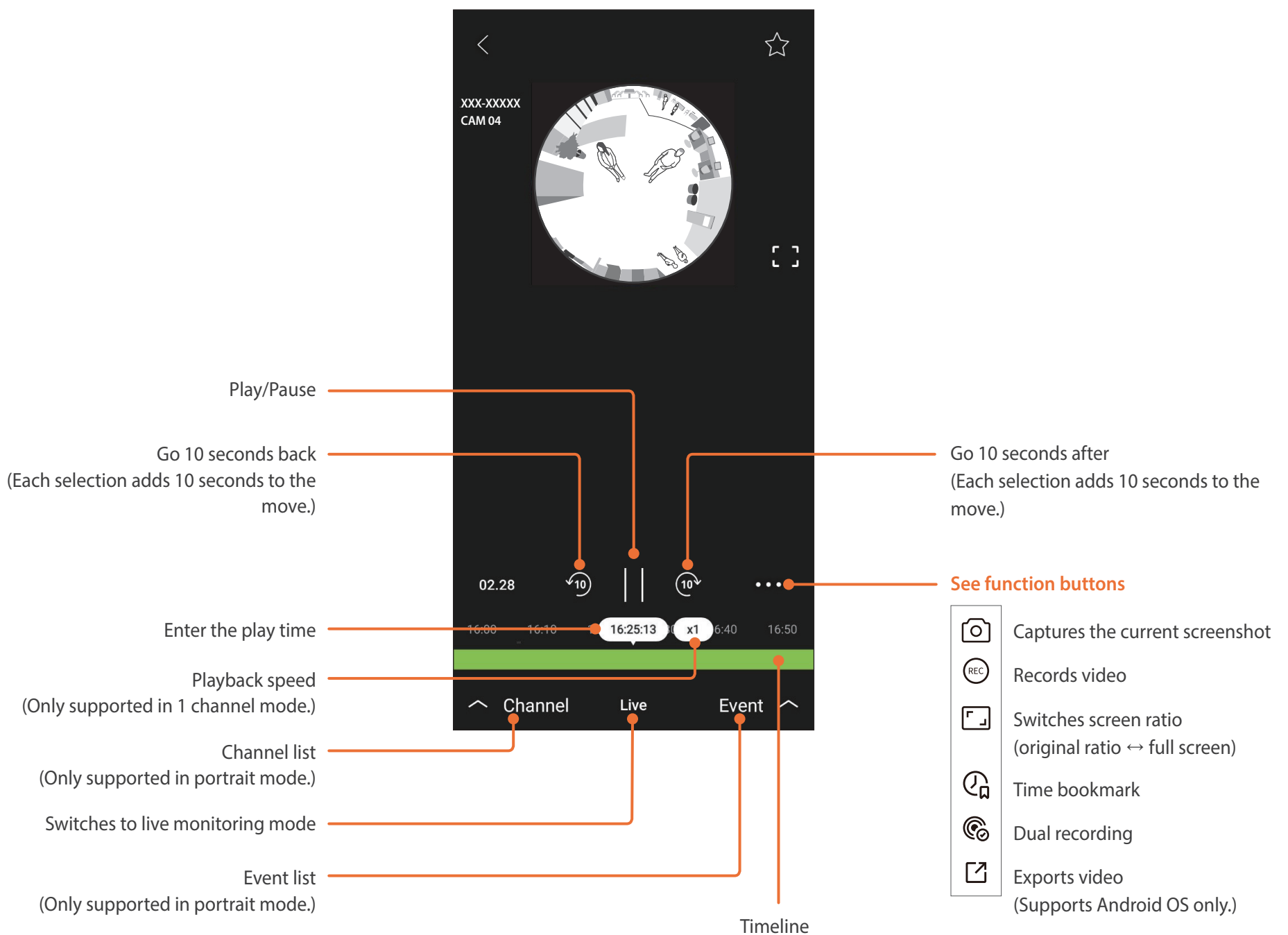
Moving to Playback mode

Drag on the timeline left and right to change to the playback mode.

Select an date to play from the calendar or select an event to play from the event list to enter playback mode.



Playback screen details



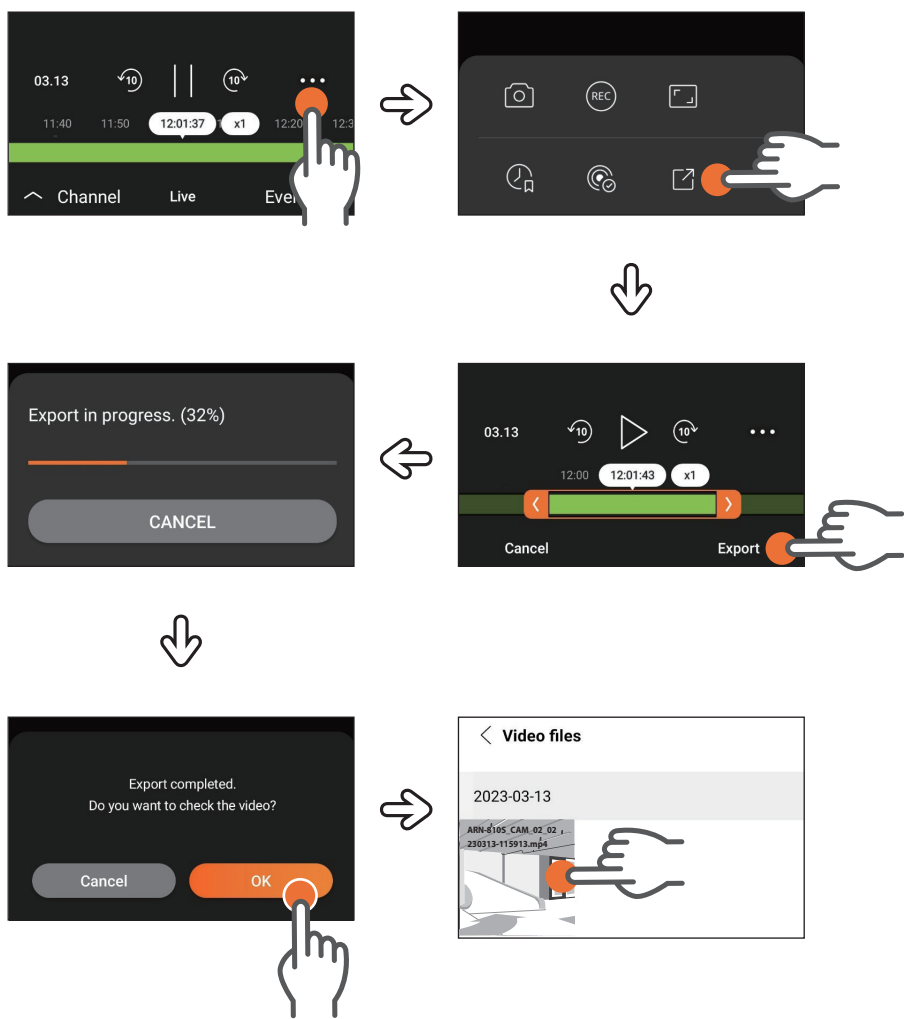


SEARCH & PLAYBACK

Search & Playback

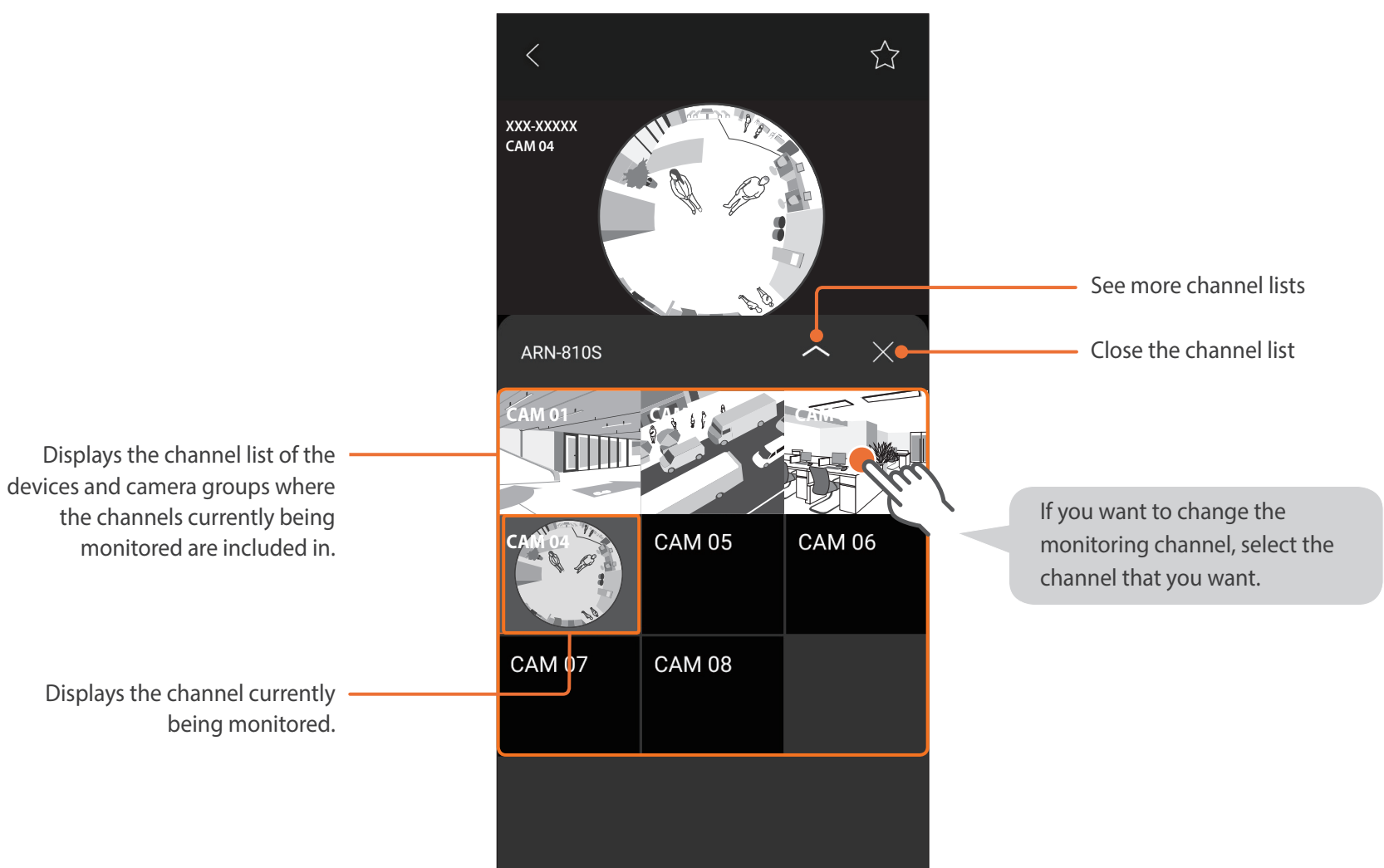
Exports video (Supports Android OS only.)

You can export the range of a video that you want on the channel in playback mode.



1. Select **⋮** > **📄** in playback mode.
 2. Drag the time interval that is displayed on the timeline left and right to set the time that you want.
 - You can select a time interval from 5 seconds to about 10 minutes.
 3. Select **Export**.
 4. Select **OK** to check the video after the export is complete.
 - Move to the video file list screen.
 5. Select a video thumbnail to play the video from the list.
 - You can share (**📤**), pause (**⏸**), or delete (**🗑**) the video.
- 🔍** For exported files, you can check them in **☰** > **Video files** from the top-left of the main screen.

Selects channel





SEARCH & PLAYBACK

Search & Playback

Event search

Searches date - Only dates with video recording will be shown in the calendar.

Event list - Select an event to play it.

- See more event lists
- Close the event list
- Adds/deletes bookmark
- Select event type/bookmark/overlapped section

Event Filter:

- Event
- All
- Time bookmark
- Tampering detection
- Motion detection
- Video analytics
- Face detection
- Bookmark
- Overlap

Event types may differ depending on the model.

Event terminology description

	Motion detection		Intelligent video analytics		Queue detection
	Alarm input		Auto-tracking		Video analytics
	Audio detection		Normal/Manual recording		Video loss
	Tampering detection		ANPR		Loitering
	Face detection		Defocus detection		Shock detection
	Network disconnection		Crossing		Temperature detection
	Sound classification		Entering		Temperature change detection
	Fog detection		Normal recording		Event rule

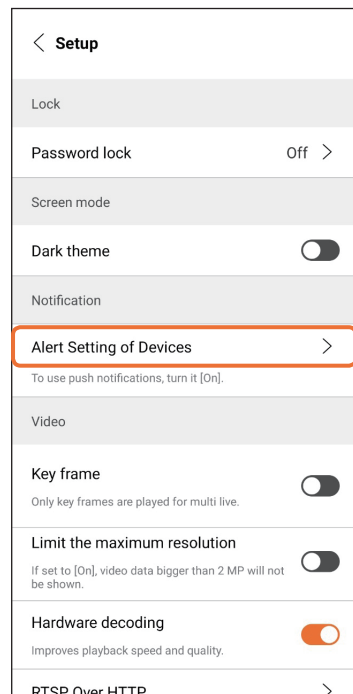
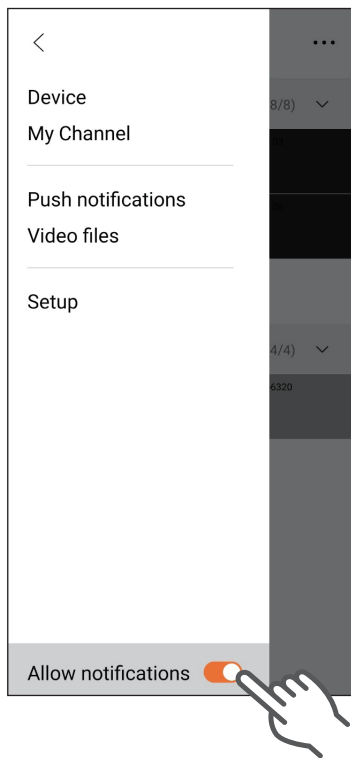


PUSH NOTIFICATION

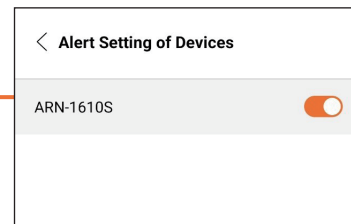
Push notification

Push notification setup

For the device registered with a QR code, you can set it up to receive a push notification whenever there is a new event.

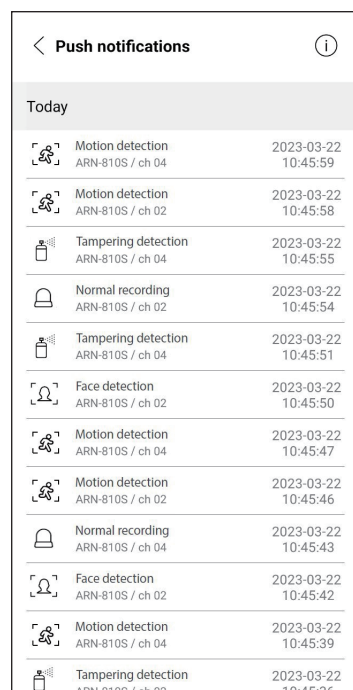
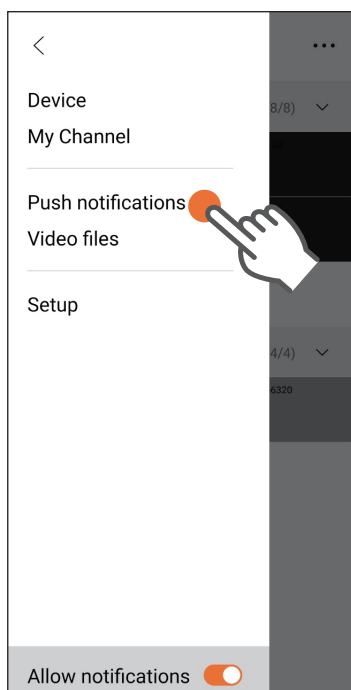


1. Select > **Allow notifications** by tapping on the top-left of the main screen.
2. Select **Setup** > **Alert Setting of Devices** and then set the device you will allow push notifications to .



Event reception

If you select an event that you want to play from the push notifications list, you can monitor the video. Also, if you select an event that is received from the mobile push notifications list, the app will open immediately and the push notifications list will be displayed.



1. Select > **Push notifications** on the top-left of the main screen.
2. If you select an event that you want to play from the push notifications list, you can check the video.
 - You cannot check the events of a channel that is not registered in the app.



SETTINGS

Setup menu

Setup menu

If you select  > **Setup** on the top-left of the main screen, you can check the setup menu.

< Setup	
Lock	
Password lock	Off >
Screen mode	
Dark theme	<input type="checkbox"/>
Notification	
Alert Setting of Devices	>
<small>To use push notifications, turn it [On].</small>	
Video	
Key frame	<input type="checkbox"/>
<small>Only key frames are played for multi live.</small>	
Limit the maximum resolution	<input type="checkbox"/>
<small>If set to [On], video data bigger than 2 MP will not be shown.</small>	
Hardware decoding	<input checked="" type="checkbox"/>
<small>Improves playback speed and quality.</small>	
RTSP Over HTTP	>

Lock

Menu	Feature description
Password lock	You can set whether or not to use a password when you run Wisenet mobile.
Biometric authentication lock	When starting Wisenet mobile, you can select whether to use face or fingerprint recognition. <ul style="list-style-type: none"> • Android: Face, iris, or fingerprint recognition • iOS: Face or fingerprint recognition
Change password	You can change your password when you run Wisenet mobile.

Screen mode

Menu	Feature description
Dark theme	You can set the color theme of Wisenet mobile.

Notification

Menu	Feature description
Alert Setting of Devices	You can select a device to receive push notifications.

Video

Menu	Feature description
Key frame	For multi-live, you can only monitor important scenes.
Limit the maximum resolution	You can select whether or not to play a video whose resolution is greater than 2MB.
Hardware decoding	This improves playback speed and quality.
RTSP over HTTP RTSP over TCP	When you cannot receive video due to the network of your carrier network provider, select RTSP over TCP, and enter RTSP port information of the device.
DTLS	If you want to switch from video performance priority to security priority, set as <input checked="" type="checkbox"/> .



Video setup may differ depending on the operating system.

More

Menu	Feature description
Improvement activities	You can set whether to participate on improving the user experience and performance of Wisenet mobile.
User guide	You can check Wisenet mobile user guide.
FAQ	Go to Wisenet mobile FAQ.
Wisenet mobile information	You can check the information about Wisenet mobile and its open source license.

